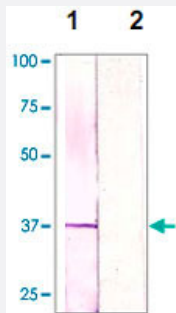


CDC2 polyclonal antibody

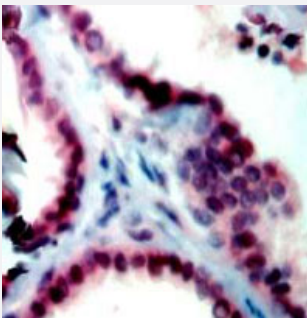
Catalog # PAB12757 Size 100 ug

Applications



Western Blot (Cell lysate)

The A-431 cell lysate resolved onto 12% SDS-PAGE, transferred onto NC membrane, and followed by an immunoblotting with CDC2 polyclonal antibody (Cat # PAB12757, lane 1) at 1 : 500, or with a pre-incubation of immunizing peptide (lane 2).



Immunohistochemistry (Formalin/PFA-fixed paraffin-embedded sections)

Immunohistochemical staining of human prostate tissue stained with CDC2 polyclonal antibody (Cat # PAB12757) at 1 : 200 for 10 min at RT. Staining of formalin-fixed tissue requires boiling tissue sections in 10 mM Citrate Buffer, pH 6.0 for 10 min followed by cooling at RT for 20 min.

Specification

Product Description	Rabbit polyclonal antibody raised against synthetic peptide of CDC2.
Immunogen	A synthetic peptide corresponding to C-terminus of human, mouse and rat CDC2.
Host	Rabbit
Reactivity	Human, Mouse, Rat
Form	Liquid
Quality Control Testing	Antibody Reactive Against Synthetic Peptide.

Recommend Usage	Western Blot (0.1-1 ug/mL)
	Immunoprecipitation (2-5 ug/mL)
	Immunohistochemistry (1:200)
	The optimal working dilution should be determined by the end user.

Storage Buffer	In TBS, pH 7.2 (BSA, 10% Proclin300)
-----------------------	--------------------------------------

Storage Instruction	Store at 4°C. For long term storage store at -20°C or lower. Aliquot to avoid repeated freezing and thawing.
----------------------------	---

Applications

- Western Blot (Cell lysate)

The A-431 cell lysate resolved onto 12% SDS-PAGE, transferred onto NC membrane, and followed by an immunoblotting with CDC2 polyclonal antibody (Cat # PAB12757, lane 1) at 1 : 500, or with a pre-incubation of immunizing peptide (lane 2).

- Immunohistochemistry (Formalin/PFA-fixed paraffin-embedded sections)

Immunohistochemical staining of human prostate tissue stained with CDC2 polyclonal antibody (Cat # PAB12757) at 1 : 200 for 10 min at RT. Staining of formalin-fixed tissue requires boiling tissue sections in 10 mM Citrate Buffer, pH 6.0 for 10 min followed by cooling at RT for 20 min.

- Immunoprecipitation

- Enzyme-linked Immunoabsorbent Assay

Publication Reference

- [Cell cycle independent interaction of CDC2 with the centrosome, which is associated with the nuclear matrix-intermediate filament scaffold.](#)

Pockwinse SM, Krockmalnic G, Doxsey SJ, Nickerson J, Lian JB, van Wijnen AJ, Stein JL, Stein GS, Penman S.
PNAS 1997 Apr; 94(7):3022.

Application: IF, EM, Human, Saos-2, WI-38, HeLa, IMR-90 cells