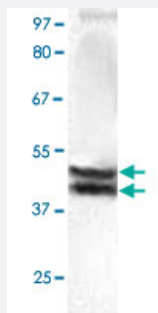


MAPK1/MAPK3 (phospho T202/Y204) polyclonal antibody

Catalog # PAB12748

Size 100 ug

Applications



Western Blot (Cell lysate)

The whole cell lysate derived from UV treated NIH/3T3 was separated in 10% SDS-PAGE, transferred onto NC membrane, and immunoblotted by MAPK1 (phospho T202/Y204) polyclonal antibody (Cat # PAB12748) at 1 : 500. A dual immunoreactive band around ~ 42/44 kDa is observed.

Specification

Product Description	Rabbit polyclonal antibody raised against synthetic phosphopeptide of MAPK1.
Immunogen	Synthetic phosphopeptide corresponding to residues surrounding T202/Y204 of human, mouse, rat and dog MAPK1/MAPK3.
Host	Rabbit
Reactivity	Dog, Human, Mouse, Rat
Specificity	This antibody recognizes MAPK1/MAPK3 (pT202/pY204) with the dual phosphorylation sites. It does not cross-react with non-phosphospecific peptide.
Form	Liquid
Quality Control Testing	Antibody Reactive Against Synthetic Peptide.
Recommend Usage	Western Blot (0.1-1 ug/mL) ELISA (0.01-0.1 ug/mL) Immunoprecipitation (2-5 ug/mL) The optimal working dilution should be determined by the end user.
Storage Buffer	In TBS, pH 7.2 (BSA, 10% Proclin300)

Storage Instruction

Store at -20°C. For long term storage store at -80°C.
Aliquot to avoid repeated freezing and thawing.

Applications

- Western Blot (Cell lysate)

The whole cell lysate derived from UV treated NIH/3T3 was separated in 10% SDS-PAGE, transferred onto NC membrane, and immunoblotted by MAPK1 (phospho T202/Y204) polyclonal antibody (Cat # PAB12748) at 1 : 500. A dual immunoreactive band around ~ 42/44 kDa is observed.

- Immunohistochemistry

- Immunoprecipitation

- Enzyme-linked Immunoabsorbent Assay

Publication Reference

- [Ovarian cancer cells modulate human blood neutrophils response to activation in vitro.](#)

Klink M, Jastrzebska K, Nowak M, Bednarska K, Szpakowski M, Szylo K, Sulowska Z.

Scandinavian Journal of Immunology 2008 Jun; 68(3):328.