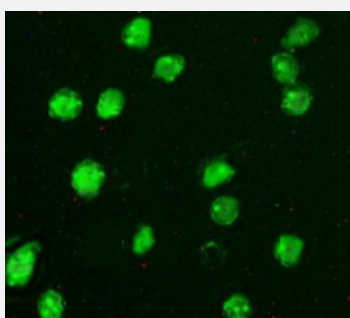


Trimethyl-Histone H3 polyclonal antibody

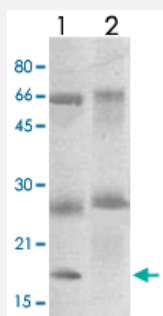
Catalog # PAB12741 Size 100 ug

Applications



Immunofluorescence

Fluorescent Immunohistochemistry : NIH/3T3 cells were cultured in chamber, and fixed onto slide followed by incubation with Trimethyl-Histone H3 polyclonal antibody (Cat # PAB12741) at 1 : 100 for 10 min at RT. FITC labeled Gt anti Rb IgG was used for visualization under fluorescent microscope.



Immunoprecipitation

The nuclear extract derived from NIH/3T3 were immunoprecipitated by 4 ug of Trimethyl-Histone H3 polyclonal antibody (Cat # PAB12741) (Lane 2) and a rabbit IgG as a control (Lane 1), then probed with Trimethyl-Histone H3 polyclonal antibody (Cat # PAB12741) at 1 : 1000.

An immunoreactive band at ~17 KDa is observed.

Note: ~50 KDa and ~22 KDa are the rabbit immunoglobulin heavy and light chain.

Specification

Product Description	Rabbit polyclonal antibody raised against synthetic peptide of Trimethyl-Histone H3.
Immunogen	A synthetic peptide corresponding to trimethyl lysine 4 of human Histone H3.
Host	Rabbit
Theoretical MW (kDa)	17
Reactivity	Bovine, Chicken, Human, Mouse, Rat
Specificity	This antibody only recognizes ~ 17 KDa of Trimethylated Histone H3 at K4. It does not cross react to non-methylated H3 or mono-, di-methylated Histone H3.

Form	Liquid
Quality Control Testing	Antibody Reactive Against Synthetic Peptide.
Recommend Usage	Western Blot (0.1-1 ug/mL) ELISA (0.01-0.1 ug/mL) Immunoprecipitation (2-5 ug/mL) Immunohistochemistry (1:100) The optimal working dilution should be determined by the end user.
Storage Buffer	In TBS, pH 7.2 (BSA, 10% Proclin300)
Storage Instruction	Store at 4°C. For long term storage store at -20°C or lower. Aliquot to avoid repeated freezing and thawing.

Applications

- Western Blot
- Immunohistochemistry
- Immunofluorescence

Fluorescent Immunohistochemistry : NIH/3T3 cells were cultured in chamber, and fixed onto slide followed by incubation with Trimethyl-Histone H3 polyclonal antibody (Cat # PAB12741) at 1 : 100 for 10 min at RT. FITC labeled Gt anti Rb IgG was used for visualization under fluorescent microscope.

- Immunoprecipitation

The nuclear extract derived from NIH/3T3 were immunoprecipitated by 4 ug of Trimethyl-Histone H3 polyclonal antibody (Cat # PAB12741) (Lane 2) and a rabbit IgG as a control (Lane 1), then probed with Trimethyl-Histone H3 polyclonal antibody (Cat # PAB12741) at 1 : 1000.

An immunoreactive band at ~17 KDa is observed.

Note: ~50 KDa and ~22 KDa are the rabbit immunoglobulin heavy and light chain.

- Enzyme-linked Immunoabsorbent Assay

Publication Reference

- [Demethylation of trimethylated histone H3 Lys4 in vivo by JARID1 JmjC proteins.](#)

Seward DJ, Cubberley G, Kim S, Schonewald M, Zhang L, Tripet B, Bentley DL.

Nature Structural & Molecular Biology 2007 Feb; 14(3):240.

- [Histone H3 lysine 9 methylation and HP1gamma are associated with transcription elongation through mammalian chromatin.](#)

Vakoc CR, Mandat SA, Olenchock BA, Blobel GA.

Molecular Cell 2005 Aug; 19(3):381.