

SOX9 polyclonal antibody

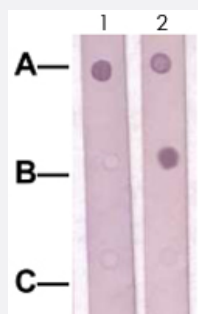
Catalog # PAB12737 Size 100 ug

Applications



Western Blot (Cell lysate)

The whole cell lysate derived from LNCaP prostate Carcinoma were immunoblotted SOX9 polyclonal antibody (Cat # PAB12737) at 1 : 500 (Lane 1). Lane 2 is a negative control.



Dot Blot (Peptide)

Dot Blot : 1 ug peptide was blot onto NC membrane.

A : SOX9 (pS181)

B : SOX9 (Paired S181) (Nonphospho)

C : Non-related phosphospecific peptide

were blotted at a 1 : 1000 dilution by :

1 : Phospho-SOX9 S181 polyclonal antibody (Cat # PAB12646) ;

2 : SOX9 polyclonal antibody (Cat # PAB12737).

Specification

Product Description	Rabbit polyclonal antibody raised against synthetic peptide of SOX9.
Immunogen	A synthetic peptide corresponding to residues surrounding S181 (RKSVK) of human SOX9.
Host	Rabbit
Theoretical MW (kDa)	56
Reactivity	Human, Mouse, Rat
Specificity	This antibody recognizes ~56 KDa of human SOX9 without phosphorylation at S181. It does not recognize the phosphorylation protein at Swe 181.

Form	Liquid
Quality Control Testing	Antibody Reactive Against Synthetic Peptide.
Recommend Usage	Western Blot (0.1-1 ug/mL) ELISA (0.01-0.1 ug/mL) Immunoprecipitation (2-5 ug/mL) Immunohistochemistry (2-5 ug/mL) The optimal working dilution should be determined by the end user.
Storage Buffer	In TBS, pH 7.2 (BSA, 10% Proclin300)
Storage Instruction	Store at 4°C. For long term storage store at -20°C or lower. Aliquot to avoid repeated freezing and thawing.

Applications

- Western Blot (Cell lysate)

The whole cell lysate derived from LNCaP prostate Carcinoma were immunoblotted SOX9 polyclonal antibody (Cat # PAB12737) at 1 : 500 (Lane 1). Lane 2 is a negative control.

- Immunohistochemistry

- Immunoprecipitation

- Enzyme-linked Immunoabsorbent Assay

- Dot Blot (Peptide)

Dot Blot : 1 ug peptide was blot onto NC membrane.

A : SOX9 (pS181)

B : SOX9 (Paired S181) (Nonphospho)

C : Non-related phosphospecific peptide

were blotted at a 1 : 1000 dilution by :

1 : Phospho-SOX9 S181 polyclonal antibody (Cat # PAB12646) ;

2 : SOX9 polyclonal antibody (Cat # PAB12737).

Gene Info — SOX9

Entrez GeneID	6662
Gene Name	SOX9
Gene Alias	CMD1, CMPD1, SRA1

Gene Description	SRY (sex determining region Y)-box 9
Omim ID	114290 608160
Gene Ontology	Hyperlink
Gene Summary	The protein encoded by this gene recognizes the sequence CCTTGAG along with other members of the HMG-box class DNA-binding proteins. It acts during chondrocyte differentiation and, with steroidogenic factor 1, regulates transcription of the anti-Muellerian hormone (AMH) gene. Deficiencies lead to the skeletal malformation syndrome campomelic dysplasia, frequently with sex reversal. [provided by RefSeq]
Other Designations	SRY (sex determining region Y)-box 9 (campomelic dysplasia, autosomal sex-reversal) SRY (sex-determining region Y)-box 9 (campomelic dysplasia, autosomal sex-reversal) SRY (sex-determining region Y)-box 9 protein campomelic dysplasia, autosomal sex-revers

Publication Reference

- [SOX9 is expressed in normal prostate basal cells and regulates androgen receptor expression in prostate cancer cells.](#)

Wang H, McKnight NC, Zhang T, Lu ML, Balk SP, Yuan X.

Cancer Research 2007 Jan; 67(2):528.

Application: IHC-P, WB, Human, C3H10T, CWR22Rv1, RCS cells, Human prostate cancer

Disease

- [Cleft Lip](#)
- [Cleft Palate](#)
- [Genetic Predisposition to Disease](#)
- [Hypospadias](#)
- [Ovarian Neoplasms](#)
- [Sex determination](#)