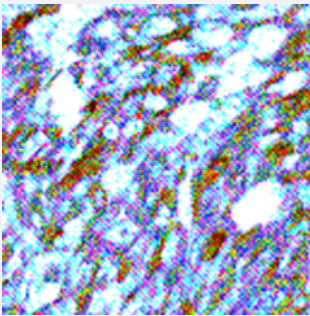


# S100A1 polyclonal antibody

Catalog # PAB12732      Size 100 ug

## Applications



### Immunohistochemistry (Formalin/PFA-fixed paraffin-embedded sections)

Immunohistochemical staining of human melanoma with S100A1 polyclonal antibody (Cat # PAB12732) at 1 : 300 for 10 min at RT. Staining of formalin-fixed tissue requires boiling tissue sections in 10 mM Citrate Buffer, pH 6.0 for 10 min followed by cooling at RT for 20 min.

## Specification

|                                |   |
|--------------------------------|---|
| <b>Product Description</b>     | Rabbit polyclonal antibody raised against recombinant S100A1.   |
| <b>Immunogen</b>               | Recombinant protein corresponding to human S100A1.  |
| <b>Host</b>                    | Rabbit  |
| <b>Theoretical MW (kDa)</b>    | 22, 11  |
| <b>Reactivity</b>              | Human, Mouse, Rat   |
| <b>Specificity</b>             | This antibody recognizes 22 KDa for non-reduced S100A1 and 11 KDa for reduced S100A1.   |
| <b>Form</b>                    | Liquid  |
| <b>Quality Control Testing</b> | Antibody Reactive Against Recombinant Protein.  |
| <b>Recommend Usage</b>         | Western Blot (0.1-1 ug/mL)<br>ELISA (0.01-0.1 ug/mL)<br>Immunoprecipitation (2-5 ug/mL)<br>Immunohistochemistry (1:300)<br>The optimal working dilution should be determined by the end user. |
| <b>Storage Buffer</b>          | In TBS, pH 7.2 (BSA, 10% Proclin300)  |

**Storage Instruction**

Store at 4°C. For long term storage store at -20°C or lower.

Aliquot to avoid repeated freezing and thawing. Upon initial thawing, apportion into working aliquots and store at -80°C for up to six months.

## Applications

- Western Blot
- Immunohistochemistry (Formalin/PFA-fixed paraffin-embedded sections)

Immunohistochemical staining of human melanoma with S100A1 polyclonal antibody (Cat # PAB12732) at 1 : 300 for 10 min at RT. Staining of formalin-fixed tissue requires boiling tissue sections in 10 mM Citrate Buffer, pH 6.0 for 10 min followed by cooling at RT for 20 min.

- Immunoprecipitation
- Enzyme-linked Immunoabsorbent Assay

## Gene Info — S100A1

**Entrez GeneID** [6271](#)

**Gene Name** S100A1

**Gene Alias** S100, S100-alpha, S100A

**Gene Description** S100 calcium binding protein A1

**Omim ID** [176940](#)

**Gene Ontology** [Hyperlink](#)

**Gene Summary** The protein encoded by this gene is a member of the S100 family of proteins containing 2 EF-hand calcium-binding motifs. S100 proteins are localized in the cytoplasm and/or nucleus of a wide range of cells, and involved in the regulation of a number of cellular processes such as cell cycle progression and differentiation. S100 genes include at least 13 members which are located as a cluster on chromosome 1q21. This protein may function in stimulation of Ca<sup>2+</sup>-induced Ca<sup>2+</sup> release, inhibition of microtubule assembly, and inhibition of protein kinase C-mediated phosphorylation. Reduced expression of this protein has been implicated in cardiomyopathies. [provided by RefSeq]

**Other Designations** OTTHUMP00000035100|S100 alpha|S100 calcium-binding protein A1|S100 protein, alpha polypeptide

## Disease

- [Breast cancer](#)
- [Breast Neoplasms](#)
- [Dermatitis](#)
- [DNA Damage](#)
- [Genetic Predisposition to Disease](#)