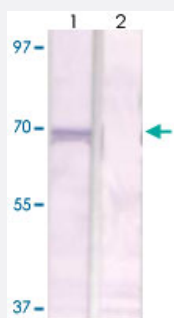


RPS6KB1 polyclonal antibody

Catalog # PAB12720 Size 100 ug

Applications



Western Blot (Cell lysate)

The cell lysate derived from NIH/3T3 cells was immunoprobed by RPS6KB1 polyclonal antibody (Cat # PAB12720) at 1 : 500.

An immunoreactive band is observed around ~70kDa (Lane 1).

This band is blocked by pre-incubation with immunizing peptide (Lane 2).

Specification

Product Description Rabbit polyclonal antibody raised against synthetic peptide of RPS6KB1.

Immunogen A synthetic peptide corresponding to C-terminus of human RPS6KB1.

Host Rabbit

Theoretical MW (kDa) 70

Reactivity Human, Mouse, Rat

Specificity This antibody recognizes ~70 KDa of human RPS6KB1.

Form Liquid

Quality Control Testing Antibody Reactive Against Synthetic Peptide.

Recommend Usage
Western Blot (0.1-1 ug/mL)
ELISA (0.01-0.1 ug/mL)
Immunoprecipitation (2-5 ug/mL)
The optimal working dilution should be determined by the end user.

Storage Buffer In TBS, pH 7.2 (BSA, 10% Proclin300)

Storage Instruction

Store at 4°C. For long term storage store at -20°C or lower.
Aliquot to avoid repeated freezing and thawing.

Applications

- Western Blot (Cell lysate)

The cell lysate derived from NIH/3T3 cells was immunoprobed by RPS6KB1 polyclonal antibody (Cat # PAB12720) at 1 : 500.
An immunoreactive band is observed around ~70kDa (Lane 1).
This band is blocked by pre-incubation with immunizing peptide (Lane 2).

- Immunohistochemistry

- Immunoprecipitation

- Enzyme-linked Immunoabsorbent Assay

Gene Info — RPS6KB1

Entrez GeneID[6198](#)**Gene Name**

RPS6KB1

Gene Alias

PS6K, S6K, S6K1, STK14A, p70(S6K)-alpha, p70-S6K, p70-alpha

Gene Description

ribosomal protein S6 kinase, 70kDa, polypeptide 1

Omim ID[608938](#)**Gene Ontology**[Hyperlink](#)**Gene Summary**

This gene encodes a member of the RSK (ribosomal S6 kinase) family of serine/threonine kinase s. This kinase contains 2 non-identical kinase catalytic domains and phosphorylates several residues of the S6 ribosomal protein. The kinase activity of this protein leads to an increase in protein synthesis and cell proliferation. Amplification of the region of DNA encoding this gene and overexpression of this kinase are seen in some breast cancer cell lines. Alternate translational start sites have been described and alternate transcriptional splice variants have been observed but have not been thoroughly characterized. [provided by RefSeq]

Other Designations

p70 S6 kinase, alpha 1|p70 S6 kinase, alpha 2|ribosomal protein S6 kinase, 70kD, polypeptide 1|serine/threonine kinase 14 alpha

Publication Reference

- [Signaling from Akt to FRAP/TOR targets both 4E-BP and S6K in Drosophila melanogaster.](#)

Miron M, Lasko P, Sonenberg N.

Molecular and Cellular Biology 2003 Dec; 23(24):9117.

Application: WB-Tr, Drosophila, S2 cells

Pathway

- [Acute myeloid leukemia](#)
- [ErbB signaling pathway](#)
- [Fc gamma R-mediated phagocytosis](#)
- [Insulin signaling pathway](#)
- [mTOR signaling pathway](#)
- [TGF-beta signaling pathway](#)

Disease

- [Cardiovascular Diseases](#)
- [Diabetes Mellitus](#)
- [Edema](#)
- [Head and Neck Neoplasms](#)
- [Neoplasm Recurrence](#)
- [Neoplasms](#)