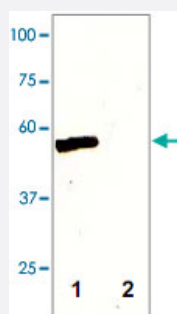


MAP2K5 polyclonal antibody

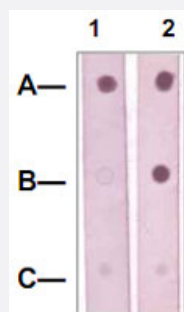
Catalog # PAB12705 Size 100 ug

Applications



Western Blot (Tissue lysate)

The tissue lysates derived from mouse liver were immunoblotted by MAP2K5 polyclonal antibody (Cat # PAB12705) at 1 : 1000 (lane 1). The lane 2 was a negative control.



Dot Blot (Peptide)

Dot Blot : 1 ug peptide was blot onto NC membrane.

A : MAP2K5 (pS311/pT315).

B : MAP2K5 (Non-phospho).

C : Non-related phospho-specific phosphopeptide.

Followed were blotted at a 1 : 1000 dilution by :

1. Phospho-MAP2K5 S311/T315 polyclonal antibody (Cat # PAB12634).
2. MAP2K5 polyclonal antibody (Cat # PAB12705).

Specification

Product Description	Rabbit polyclonal antibody raised against synthetic peptide of MAP2K5.
Immunogen	A synthetic peptide corresponding to residues surrounding S311 and T315 of human MAP2K5.
Host	Rabbit
Theoretical MW (kDa)	49
Reactivity	Chicken, Human, Mouse, Rat
Specificity	This antibody recognizes ~49 KDa of human MAP2K5 without phosphorylation sites of Ser311/Thr315.

Form	Liquid
Quality Control Testing	Antibody Reactive Against Synthetic Peptide.
Recommend Usage	Western Blot (0.1-1 ug/mL) ELISA (0.01-0.1 ug/mL) Immunoprecipitation (2-5 ug/mL) Immunohistochemistry (2-5 ug/mL) The optimal working dilution should be determined by the end user.
Storage Buffer	In TBS, pH 7.2 (BSA, 10% Proclin300)
Storage Instruction	Store at 4°C. For long term storage store at -20°C or lower. Aliquot to avoid repeated freezing and thawing.

Applications

- Western Blot (Tissue lysate)

The tissue lysates derived from mouse liver were immunoblotted by MAP2K5 polyclonal antibody (Cat # PAB12705) at 1 : 1000 (lane 1). The lane 2 was a negative control.

- Immunohistochemistry

- Immunoprecipitation

- Enzyme-linked Immunoabsorbent Assay

- Dot Blot (Peptide)

Dot Blot : 1 ug peptide was blot onto NC membrane.

A : MAP2K5 (pS311/pT315).

B : MAP2K5 (Non-phospho).

C : Non-related phospho-specific phosphopeptide.

Followed were blotted at a 1 : 1000 dilution by :

1. Phospho-MAP2K5 S311/T315 polyclonal antibody (Cat # PAB12634).
2. MAP2K5 polyclonal antibody (Cat # PAB12705).

Gene Info — MAP2K5

Entrez GeneID	5607
Gene Name	MAP2K5
Gene Alias	HsT17454, MAPKK5, MEK5, PRKMK5

Gene Description	mitogen-activated protein kinase kinase 5
Omim ID	602520
Gene Ontology	Hyperlink
Gene Summary	The protein encoded by this gene is a dual specificity protein kinase that belongs to the MAP kinase family. This kinase specifically interacts with and activates MAPK7/ERK5. This kinase itself can be phosphorylated and activated by MAP3K3/MEKK3, as well as by atypical protein kinase C isoforms (aPKCs). The signal cascade mediated by this kinase is involved in growth factor stimulated cell proliferation and muscle cell differentiation. Four alternatively spliced transcript variants of this gene encoding distinct isoforms have been described. [provided by RefSeq]
Other Designations	MAP kinase kinase MEK5b MAPK/ERK kinase 5 dual specificity mitogen-activated protein kinase kinase 5

Publication Reference

- [Effects of MEK5/ERK5 association on small ubiquitin-related modification of ERK5: implications for diabetic ventricular dysfunction after myocardial infarction.](#)

Shishido T, Woo CH, Ding B, McClain C, Molina CA, Yan C, Yang J, Abe J.

Circulation Research 2008 May; 102(11):1416.

Pathway

- [Gap junction](#)
- [MAPK signaling pathway](#)
- [Neurotrophin signaling pathway](#)

Disease

- [Attention Deficit Disorder with Hyperactivity](#)
- [Cardiovascular Diseases](#)
- [Diabetes Mellitus](#)
- [Edema](#)
- [Genetic Predisposition to Disease](#)

- [Neuropsychological Tests](#)
- [Nocturnal Myoclonus Syndrome](#)
- [Obsessive-Compulsive Disorder](#)
- [Restless Legs Syndrome](#)
- [Tourette Syndrome](#)