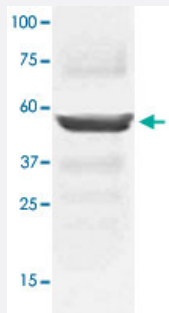


MAP2K5 polyclonal antibody

Catalog # PAB12704 Size 100 ug

Applications



Western Blot (Tissue lysate)

The tissue lysates derived from mouse liver were immunoblotted by MAP2K5 polyclonal antibody (Cat # PAB12704) at 1 : 1000.

Specification

Product Description Rabbit polyclonal antibody raised against synthetic peptide of MAP2K5.

Immunogen A synthetic peptide corresponding to C-terminus of human MAP2K5.

Host Rabbit

Theoretical MW (kDa) 49

Reactivity Chicken, Dog, Human, Mouse, Rat

Specificity This antibody recognizes ~49 KDa of human MAP2K5.

Form Liquid

Quality Control Testing Antibody Reactive Against Synthetic Peptide.

Recommend Usage
 Western Blot (0.1-1 ug/mL)
 ELISA (0.01-0.1 ug/mL)
 Immunoprecipitation (2-5 ug/mL)
 Immunohistochemistry (2-5 ug/mL)
 The optimal working dilution should be determined by the end user.

Storage Buffer In TBS, pH 7.2 (BSA, 10% Proclin300)

Storage Instruction

Store at 4°C. For long term storage store at -20°C or lower.
Aliquot to avoid repeated freezing and thawing.

Applications

- Western Blot (Tissue lysate)

The tissue lysates derived from mouse liver were immunoblotted by MAP2K5 polyclonal antibody (Cat # PAB12704) at 1 : 1000.

- Immunohistochemistry

- Immunoprecipitation

- Enzyme-linked Immunoabsorbent Assay

Gene Info — MAP2K5

| | |
|---------------|----------------------|
| Entrez GeneID | 5607 |
|---------------|----------------------|

| | |
|-----------|--------|
| Gene Name | MAP2K5 |
|-----------|--------|

| | |
|------------|--------------------------------|
| Gene Alias | HsT17454, MAPKK5, MEK5, PRKMK5 |
|------------|--------------------------------|

| | |
|------------------|---|
| Gene Description | mitogen-activated protein kinase kinase 5 |
|------------------|---|

| | |
|---------|------------------------|
| Omim ID | 602520 |
|---------|------------------------|

| | |
|---------------|---------------------------|
| Gene Ontology | Hyperlink |
|---------------|---------------------------|

| | |
|--------------|--|
| Gene Summary | The protein encoded by this gene is a dual specificity protein kinase that belongs to the MAP kinase family. This kinase specifically interacts with and activates MAPK7/ERK5. This kinase itself can be phosphorylated and activated by MAP3K3/MEKK3, as well as by atypical protein kinase C isoforms (aPKCs). The signal cascade mediated by this kinase is involved in growth factor stimulated cell proliferation and muscle cell differentiation. Four alternatively spliced transcript variants of this gene encoding distinct isoforms have been described. [provided by RefSeq] |
|--------------|--|

| | |
|--------------------|--|
| Other Designations | MAP kinase kinase MEK5b MAPK/ERK kinase 5 dual specificity mitogen-activated protein kinase kinase 5 |
|--------------------|--|

Publication Reference

- [Effects of MEK5/ERK5 association on small ubiquitin-related modification of ERK5: implications for diabetic ventricular dysfunction after myocardial infarction.](#)

Shishido T, Woo CH, Ding B, McClain C, Molina CA, Yan C, Yang J, Abe J.

Circulation Research 2008 May; 102(11):1416.

Pathway

- [Gap junction](#)
- [MAPK signaling pathway](#)
- [Neurotrophin signaling pathway](#)

Disease

- [Attention Deficit Disorder with Hyperactivity](#)
- [Cardiovascular Diseases](#)
- [Diabetes Mellitus](#)
- [Edema](#)
- [Genetic Predisposition to Disease](#)
- [Neuropsychological Tests](#)
- [Nocturnal Myoclonus Syndrome](#)
- [Obsessive-Compulsive Disorder](#)
- [Restless Legs Syndrome](#)
- [Tourette Syndrome](#)