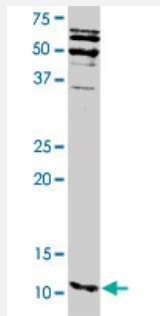


S100A16 polyclonal antibody

Catalog # PAB1270

Size 50 ug

Applications



Western Blot (Tissue lysate)

S100A16 polyclonal antibody (Cat # PAB1270). Western blot analysis of S100A16 in human liver.

Specification

Product Description Rabbit polyclonal antibody raised against full length recombinant S100A16.

Immunogen Recombinant protein corresponding to full length human S100A16.

Host Rabbit

Reactivity Human

Specificity This antibody detects endogenous levels of S100A16 protein.

Form Liquid

Recommend Usage Western Blot (0.5-1 ug/mL)
The optimal working dilution should be determined by the end user.

Storage Buffer In 10 mM phosphate buffer, 150 mM NaCl, pH 7.5 (50% glycerol)

Storage Instruction Store at -20°C.
Aliquot to avoid repeated freezing and thawing.

Applications

- Western Blot (Tissue lysate)

S100A16 polyclonal antibody (Cat # PAB1270). Western blot analysis of S100A16 in human liver.

[Protocol Download](#)

- Western Blot (Cell lysate)

Gene Info — S100A16

Entrez GeneID	140576
GeneBank Accession#	NM_080388
Protein Accession#	NP_525127
Gene Name	S100A16
Gene Alias	AAG13, DT1P1A7, MGC17528, S100F
Gene Description	S100 calcium binding protein A16
Gene Ontology	Hyperlink
Other Designations	OTTHUMP00000015465 OTTHUMP00000015466 OTTHUMP00000032893 OTTHUMP00000032894 aging-associated protein 13