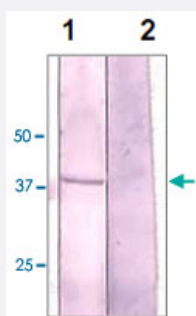


GSK3A polyclonal antibody

Catalog # PAB12687 Size 100 ug

Applications



Western Blot (Cell lysate)

The NIH/3T3 cell lysate was resolved onto 10% SDS-PAGE, transferred onto NC membrane, and followed by an immunoblotting with GSK3A polyclonal antibody (Cat # PAB12687) at 1 : 500 (lane 1). Lane 2 was pre-incubated with immunizing peptide.

Specification

Product Description Rabbit polyclonal antibody raised against synthetic peptide of GSK3A.

Immunogen A synthetic peptide corresponding to N-terminus of human GSK3A.

Host Rabbit

Reactivity Human, Mouse, Rat

Specificity This antibody recognizes GSK3A.

Form Liquid

Quality Control Testing Antibody Reactive Against Synthetic Peptide.

Recommend Usage
Western Blot (0.1-1 ug/mL)
ELISA (0.01-0.1 ug/mL)
Immunoprecipitation (2-5 ug/mL)
The optimal working dilution should be determined by the end user.

Storage Buffer In TBS, pH 7.2 (BSA, 10% Proclin300)

Storage Instruction
Store at 4°C. For long term storage store at -20°C or lower.
Aliquot to avoid repeated freezing and thawing.

Applications

- Western Blot (Cell lysate)

The NIH/3T3 cell lysate was resolved onto 10% SDS-PAGE, transferred onto NC membrane, and followed by an immunoblotting with GSK3A polyclonal antibody (Cat # PAB12687) at 1 : 500 (lane 1). Lane 2 was pre-incubated with immunizing peptide.

- Immunohistochemistry

- Immunoprecipitation

- Enzyme-linked Immunoabsorbent Assay

Gene Info — GSK3A

Entrez GeneID [2931](#)

Gene Name GSK3A

Gene Alias DKFZp686D0638

Gene Description glycogen synthase kinase 3 alpha

Omim ID [606784](#)

Gene Ontology [Hyperlink](#)

Gene Summary Glycogen synthase kinase 3-alpha (GSK3A; EC {2.7.1.37}) is a multifunctional protein serine kinase, homologous to Drosophila 'shaggy' (zeste-white3) and implicated in the control of several regulatory proteins including glycogen synthase (see GYS1, {138570}) and transcription factors (e.g., JUN, {165160}). It also plays a role in the WNT ({164820}) and PI3K (see PIK3CG, {601232}) signaling pathways (see review by {1:Ali et al. (2001)}).[supplied by OMIM]

Other Designations -

Publication Reference

- [GSK3alpha exhibits beta-catenin and tau directed kinase activities that are modulated by Wnt.](#)

Asuni AA, Hooper C, Reynolds CH, Lovestone S, Anderton BH, Killick R.

The European Journal of Neuroscience 2006 Dec; 24(12):3387.

Application: WB, Mouse, CHO cells

- [Protein kinase C betaII regulates Akt phosphorylation on Ser-473 in a cell type- and stimulus-specific fashion.](#)

Kawakami Y, Nishimoto H, Kitaura J, Maeda-Yamamoto M, Kato RM, Littman DR, Leitges M, Rawlings DJ, Kawakami T.

The Journal of Biological Chemistry 2004 Nov; 279(46):47720.

Application: WB, Mouse, Mouse bone marrow-derived mast cells

Pathway

- [Chemokine signaling pathway](#)

Disease

- [Cognition](#)
- [Coronary Disease](#)
- [Genetic Predisposition to Disease](#)
- [Schizophrenia](#)
- [Schizophrenic Psychology](#)
- [Weight Gain](#)