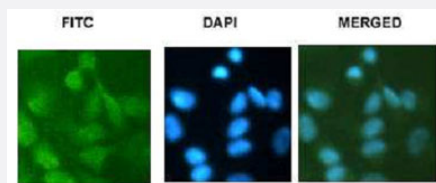


HIST2H3C polyclonal antibody

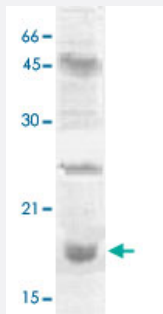
Catalog # PAB12679 Size 100 ug

Applications

Immunofluorescence



Fluorescent Immunohistochemistry : NIH/3T3 cells were cultured in chamber, and fixed onto slide followed by incubation with 5 ug/mL HIST2H3C polyclonal antibody (Cat # PAB12679), then FITC labeled Goat anti Rabbit IgG for visualization under fluorescent microscope.



Immunoprecipitation

The nuclear extract derived from NIH/3T3 were immunoprecipitated by 4 ug of HIST2H3C polyclonal antibody (Cat # PAB12679), then probed with HIST2H3C polyclonal antibody (Cat # PAB12679) at 1 : 1000. An immunoreactive band at ~17 KDa is observed.

Note : ~50 KDa and ~22 KDa are the rabbit immunoglobulin heavy and light chain.

Specification

Product Description	Rabbit polyclonal antibody raised against synthetic peptide of HIST2H3C.
Immunogen	A synthetic peptide corresponding to dimethyl lysine 27 of human HIST2H3C.
Host	Rabbit
Theoretical MW (kDa)	17
Reactivity	Human, Mouse, Rat
Specificity	This antibody only recognizes ~17 KDa of Dimethylated HIST2H3C. It does not cross react to non-methylated H3 or mono-, Tri-methylated Histone H3.

Form	Liquid
Quality Control Testing	Antibody Reactive Against Synthetic Peptide.
Recommend Usage	Western Blot (0.1-1 ug/mL) ELISA (0.01-0.1 ug/mL) Immunoprecipitation (2-5 ug/mL) Immunohistochemistry (1:100) The optimal working dilution should be determined by the end user.
Storage Buffer	In TBS, pH 7.2 (BSA, 10% Proclin300)
Storage Instruction	Store at 4°C. For long term storage store at -20°C or lower. Aliquot to avoid repeated freezing and thawing.

Applications

- ChIP
- Western Blot
- Immunohistochemistry
- Immunofluorescence

Fluorescent Immunohistochemistry : NIH/3T3 cells were cultured in chamber, and fixed onto slide followed by incubation with 5 ug/mL HIST2H3C polyclonal antibody (Cat # PAB12679), then FITC labeled Goat anti Rabbit IgG for visualization under fluorescent microscope.

- Immunoprecipitation

The nuclear extract derived from NIH/3T3 were immunoprecipitated by 4 ug of HIST2H3C polyclonal antibody (Cat # PAB12679), then probed with HIST2H3C polyclonal antibody (Cat # PAB12679) at 1 : 1000. An immunoreactive band at ~17 KDa is observed.

Note : ~50 KDa and ~22 KDa are the rabbit immunoglobulin heavy and light chain.

- Enzyme-linked Immunoabsorbent Assay

Gene Info — HIST2H3C

Entrez GeneID	126961
Gene Name	HIST2H3C
Gene Alias	H3, H3.2, H3/M, H3F2, H3FM, MGC9629

Gene Description	histone cluster 2, H3c
Omim ID	142780
Gene Ontology	Hyperlink
Gene Summary	<p>Histones are basic nuclear proteins that are responsible for the nucleosome structure of the chromosomal fiber in eukaryotes. This structure consists of approximately 146 bp of DNA wrapped around a nucleosome, an octamer composed of pairs of each of the four core histones (H2A, H2B, H3, and H4). The chromatin fiber is further compacted through the interaction of a linker histone, H1, with the DNA between the nucleosomes to form higher order chromatin structures. This gene is intronless and encodes a member of the histone H3 family. Transcripts from this gene lack polyA tails; instead, they contain a palindromic termination element. This gene is found in a histone cluster on chromosome 1. This gene is one of four histone genes in the cluster that are duplicated; this record represents the telomeric copy. [provided by RefSeq]</p>
Other Designations	H3 histone family, member M H3 histone, family 2 OTTHUMP00000014041 histone 2, H3c

Publication Reference

- [Demethylation of trimethylated histone H3 Lys4 in vivo by JARID1 JmjC proteins.](#)

Seward DJ, Cubberley G, Kim S, Schonewald M, Zhang L, Tripet B, Bentley DL.

Nature Structural & Molecular Biology 2007 Feb; 14(3):240.

- [Histone H3 lysine 9 methylation and HP1gamma are associated with transcription elongation through mammalian chromatin.](#)

Vakoc CR, Mandat SA, Olenchok BA, Blobel GA.

Molecular Cell 2005 Aug; 19(3):381.

Pathway

- [Systemic lupus erythematosus](#)