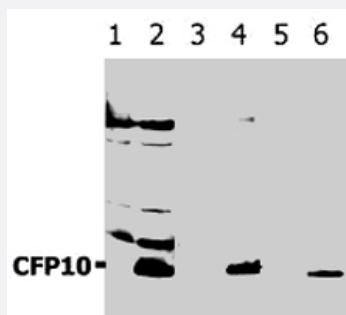


Mycobacterium tuberculosis CFP10 polyclonal antibody

Catalog # PAB1265 Size 100 ug

Applications



Western Blot

Western blotting analysis (reducing conditions) of recombinant protein CFP10 using CFP10 polyclonal antibody (Cat # PAB1265). Lane 1 , 3 , 5 : Cell lysates of non - transfected E. coli (negative controls). Lane 2 , 4 , 6 : Cell lysate of CFP10 - transfected E. coli; dilution (2) 0.5 ug/mL , (4) 0.2 ug/mL , (6) 0.1 ug/mL ; detection with Donkey anti - rabbit / HRP secondary antibody.

Specification

Product Description	Rabbit polyclonal antibody raised against <i>Mycobacterium tuberculosis</i> CFP10 (Rv3874).
Immunogen	CFP10 (Rv3874) of <i>Mycobacterium tuberculosis</i> .
Host	Rabbit
Theoretical MW (kDa)	12.3
Reactivity	Bacteria
Specificity	This antibody reacts with CFP10 (LHP), a 12.3 KDa antigen encoded by gene Rv3874 of <i>Mycobacterium tuberculosis</i> . This antibody recognizes CFP10 of <i>Mycobacterium tuberculosis</i> H37Rv and <i>Mycobacterium bovis</i> ; it reacts also with recombinant antigen produced in <i>Escherichia coli</i> .
Form	Liquid
Recommend Usage	The optimal working dilution should be determined by the end user.
Storage Buffer	In PBS, pH 7.4 (0.09% sodium azide)
Storage Instruction	Store at 4°C. Do not freeze. Aliquot to avoid repeated freezing and thawing.

Note

This product contains sodium azide: a POISONOUS AND HAZARDOUS SUBSTANCE which should be handled by trained staff only.

Applications

- Western Blot

Western blotting analysis (reducing conditions) of recombinant protein CFP10 using CFP10 polyclonal antibody (Cat # PAB1265). Lane 1 , 3 , 5 : Cell lysates of non - transfected E. coli (negative controls). Lane 2 , 4 , 6 : Cell lysate of CFP10 - transfected E. coli; dilution (2) 0.5 ug/mL , (4) 0.2 ug/mL , (6) 0.1 ug/mL ; detection with Donkey anti - rabbit / HRP secondary antibody.