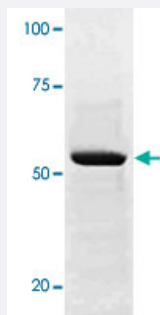


SOX9 (phospho S181) polyclonal antibody

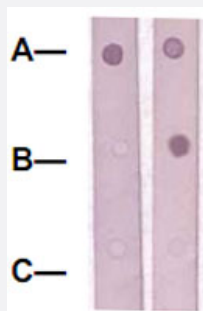
Catalog # PAB12646 Size 100 ug

Applications



Western Blot (Cell lysate)

The whole cell lysate derived from conditioned LNCaP were immunoblotted SOX9 (phospho S181) polyclonal antibody (Cat # PAB12646) at 1 : 500.



Dot Blot (Peptide)

Dot Blot : 1 ug peptide was blot onto NC membrane.

A : SOX9 (pS181).

B : SOX9 (Paired S181) (Non-phospho).

C : Non-related phosphospecific phosphopeptide.

Followed were blotted at a 1:1000 dilution by :

1 : SOX9 (phospho S181) polyclonal antibody (Cat # PAB12646).

2 : SOX9 polyclonal antibody (Cat # PAB12737).

Specification

Product Description	Rabbit polyclonal antibody raised against synthetic phosphopeptide of SOX9.
Immunogen	Synthetic phosphopeptide corresponding to residues surrounding S181 of human SOX9.
Sequence	RKSVK
Host	Rabbit
Theoretical MW (kDa)	56
Reactivity	Human, Mouse, Rat

Specificity	This antibody recognizes ~56 KDa of human SOX9 at the phosphorylation site of Ser181. It does not cross react to non-phospho SOX9.
Form	Liquid
Quality Control Testing	Antibody Reactive Against Synthetic Peptide.
Recommend Usage	Western Blot (0.1-1 ug/mL) ELISA (0.01-0.1 ug/mL) Immunoprecipitation (2-5 ug/mL) Immunohistochemistry (2-5 ug/mL) The optimal working dilution should be determined by the end user.
Storage Buffer	In TBS, pH 7.2 (BSA, 10% Proclin300)
Storage Instruction	Store at 4°C. For long term storage store at -20°C or -80°C. Aliquot to avoid repeated freezing and thawing.

Applications

- Western Blot (Cell lysate)

The whole cell lysate derived from conditioned LNCaP were immunoblotted SOX9 (phospho S181) polyclonal antibody (Cat # PAB12646) at 1 : 500.

- Immunohistochemistry

- Immunoprecipitation

- Enzyme-linked Immunoabsorbent Assay

- Dot Blot (Peptide)

Dot Blot : 1 ug peptide was blot onto NC membrane.

A : SOX9 (pS181).

B : SOX9 (Paired S181) (Non-phospho).

C : Non-related phosphospecific phosphopeptide.

Followed were blotted at a 1:1000 dilution by :

1 : SOX9 (phospho S181) polyclonal antibody (Cat # PAB12646).

2 : SOX9 polyclonal antibody (Cat # PAB12737).

Gene Info — SOX9

Entrez GeneID

[6662](#)

Gene Name

SOX9

Gene Alias	CMD1, CMPD1, SRA1
Gene Description	SRY (sex determining region Y)-box 9
Omim ID	114290 608160
Gene Ontology	Hyperlink
Gene Summary	The protein encoded by this gene recognizes the sequence CCTTGAG along with other members of the HMG-box class DNA-binding proteins. It acts during chondrocyte differentiation and, with steroidogenic factor 1, regulates transcription of the anti-Muellerian hormone (AMH) gene. Deficiencies lead to the skeletal malformation syndrome campomelic dysplasia, frequently with sex reversal. [provided by RefSeq]
Other Designations	SRY (sex determining region Y)-box 9 (campomelic dysplasia, autosomal sex-reversal) SRY (sex-determining region Y)-box 9 (campomelic dysplasia, autosomal sex-reversal) SRY (sex-determining region Y)-box 9 protein campomelic dysplasia, autosomal sex-revers

Publication Reference

- [SOX9 is expressed in normal prostate basal cells and regulates androgen receptor expression in prostate cancer cells.](#)

Wang H, McKnight NC, Zhang T, Lu ML, Balk SP, Yuan X.

Cancer Research 2007 Jan; 67(2):528.

Application: IHC-P, WB, Human, C3H10T, CWR22Rv1, RCS cells, Human prostate cancer

Disease

- [Cleft Lip](#)
- [Cleft Palate](#)
- [Genetic Predisposition to Disease](#)
- [Hypospadias](#)
- [Ovarian Neoplasms](#)
- [Sex determination](#)