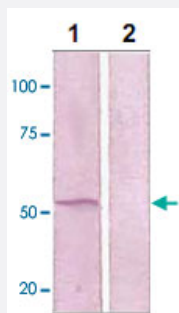


MAP2K5 (phospho S311/T315) polyclonal antibody

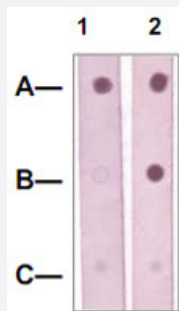
Catalog # PAB12634 Size 100 ug

Applications



Western Blot (Cell lysate)

The whole cell lysates derived from EGF-stimulated A-431 were immunoblotted by MAP2K5 (phospho S311/T315) polyclonal antibody (Cat # PAB12634) at 1 : 1000 (Lane 1). The lane 2 was pre-absorbed by immunizing peptide.



Dot Blot (Peptide)

Dot Blot : 1 ug peptide was blot onto NC membrane.

A : MAP2K5 (pS311/pT315).

B : MAP2K5 (Non-phospho).

C : Non-related phospho-specific.

Followed were blotted at a 1 : 1000 dilution by :

1. MAP2K5 (phospho S311/T315) polyclonal antibody (Cat # PAB12634).

2. MAP2K5 polyclonal antibody (Cat # PAB12705).

Specification

| | |
|----------------------|---|
| Product Description | Rabbit polyclonal antibody raised against synthetic phosphopeptide of MAP2K5. |
| Immunogen | Synthetic phosphopeptide corresponding to residues surrounding S311/T315 of human MAP2K5. |
| Sequence | SIKT |
| Host | Rabbit |
| Theoretical MW (kDa) | 49 |
| Reactivity | Human, Mouse, Rat |

| | |
|-------------------------|---|
| Specificity | This antibody recognizes ~49 KDa of human MAP2K5 at the phosphorylation site of Ser 311/Thr315. It does not cross react to non-phospho MEK5. |
| Form | Liquid |
| Quality Control Testing | Antibody Reactive Against Synthetic Peptide. |
| Recommend Usage | Western Blot (0.1-1 ug/mL) ELISA (0.01-0.1 ug/mL) Immunoprecipitation (2-5 ug/mL) Immunohistochemistry (2-5 ug/mL) The optimal working dilution should be determined by the end user. |
| Storage Buffer | In TBS, pH 7.2 (BSA, 10% Proclin300) |
| Storage Instruction | Store at 4°C. For long term storage store at -20°C to -80°C. Aliquot to avoid repeated freezing and thawing. |

Applications

- Western Blot (Cell lysate)

The whole cell lysates derived from EGF-stimulated A-431 were immunoblotted by MAP2K5 (phospho S311/T315) polyclonal antibody (Cat # PAB12634) at 1 : 1000 (Lane 1). The lane 2 was pre-absorbed by immunizing peptide.

- Immunohistochemistry

- Immunoprecipitation

- Enzyme-linked Immunoabsorbent Assay

- Dot Blot (Peptide)

Dot Blot : 1 ug peptide was blot onto NC membrane.

A : MAP2K5 (pS311/pT315).

B : MAP2K5 (Non-phospho).

C : Non-related phospho-specific.

Followed were blotted at a 1 : 1000 dilution by :

1. MAP2K5 (phospho S311/T315) polyclonal antibody (Cat # PAB12634).

2 : MAP2K5 polyclonal antibody (Cat # PAB12705).

Gene Info — MAP2K5

Entrez GeneID

[5607](#)

Gene Name

MAP2K5

| | |
|---------------------------|--|
| Gene Alias | HsT17454, MAPKK5, MEK5, PRKMK5 |
| Gene Description | mitogen-activated protein kinase kinase 5 |
| Omim ID | 602520 |
| Gene Ontology | Hyperlink |
| Gene Summary | The protein encoded by this gene is a dual specificity protein kinase that belongs to the MAP kinase family. This kinase specifically interacts with and activates MAPK7/ERK5. This kinase itself can be phosphorylated and activated by MAP3K3/MEKK3, as well as by atypical protein kinase C isoforms (aPKCs). The signal cascade mediated by this kinase is involved in growth factor stimulated cell proliferation and muscle cell differentiation. Four alternatively spliced transcript variants of this gene encoding distinct isoforms have been described. [provided by RefSeq] |
| Other Designations | MAP kinase kinase MEK5b MAPK/ERK kinase 5 dual specificity mitogen-activated protein kinase kinase 5 |

Publication Reference

- [Effects of MEK5/ERK5 association on small ubiquitin-related modification of ERK5: implications for diabetic ventricular dysfunction after myocardial infarction.](#)

Shishido T, Woo CH, Ding B, McClain C, Molina CA, Yan C, Yang J, Abe J.

Circulation Research 2008 May; 102(11):1416.

Pathway

- [Gap junction](#)
- [MAPK signaling pathway](#)
- [Neurotrophin signaling pathway](#)

Disease

- [Attention Deficit Disorder with Hyperactivity](#)
- [Cardiovascular Diseases](#)
- [Diabetes Mellitus](#)
- [Edema](#)

- [Genetic Predisposition to Disease](#)
- [Neuropsychological Tests](#)
- [Nocturnal Myoclonus Syndrome](#)
- [Obsessive-Compulsive Disorder](#)
- [Restless Legs Syndrome](#)
- [Tourette Syndrome](#)