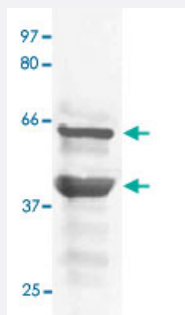


MAPK8 (phospho T183/Y185) polyclonal antibody

Catalog # PAB12630 Size 100 ug

Applications



Western Blot (Cell lysate)

The cell lysate derived from UV treated HEK 293 was immunoblotted by MAPK8 (phospho T183/Y185) polyclonal antibody (Cat # PAB12630) at 1 : 500.

Specification

Product Description	Rabbit polyclonal antibody raised against synthetic phosphopeptide of MAPK8.
Immunogen	Synthetic phosphopeptide corresponding to residues surrounding T183/Y185 of human MAPK8.
Sequence	TPY
Host	Rabbit
Theoretical MW (kDa)	49, 55
Reactivity	Human, Mouse, Rat
Specificity	This antibody recognizes human MAPK8.
Form	Liquid
Purification	Affinity purification
Isotype	IgG
Quality Control Testing	Antibody Reactive Against Synthetic Peptide.

Recommend Usage	Western Blot (0.1-1 ug/mL) ELISA (0.01-0.1 ug/mL) Immunoprecipitation (2-5 ug/mL) Immunohistochemistry (1:50) The optimal working dilution should be determined by the end user.
------------------------	--

Storage Buffer	In TBS, pH 7.2 (BSA, 10% Proclin300)
-----------------------	--------------------------------------

Storage Instruction	Store at 4°C. For long term storage store at -20 to -80°C. Aliquot to avoid repeated freezing and thawing.
----------------------------	---

Applications

- Western Blot (Cell lysate)

The cell lysate derived from UV treated HEK 293 was immunoblotted by MAPK8 (phospho T183/Y185) polyclonal antibody (Cat # PAB12630) at 1 : 500.

- Immunohistochemistry

- Immunoprecipitation

- Enzyme-linked Immunoabsorbent Assay

Gene Info — MAPK8

Entrez GeneID	5599
----------------------	----------------------

Gene Name	MAPK8
------------------	-------

Gene Alias	JNK, JNK1, JNK1A2, JNK21B1/2, PRKM8, SAPK1
-------------------	--

Gene Description	mitogen-activated protein kinase 8
-------------------------	------------------------------------

Omim ID	601158
----------------	------------------------

Gene Ontology	Hyperlink
----------------------	---------------------------

Gene Summary

The protein encoded by this gene is a member of the MAP kinase family. MAP kinases act as an integration point for multiple biochemical signals, and are involved in a wide variety of cellular processes such as proliferation, differentiation, transcription regulation and development. This kinase is activated by various cell stimuli, and targets specific transcription factors, and thus mediates immediate-early gene expression in response to cell stimuli. The activation of this kinase by tumor necrosis factor alpha (TNF-alpha) is found to be required for TNF-alpha induced apoptosis. This kinase is also involved in UV radiation induced apoptosis, which is thought to be related to cytochrome c-mediated cell death pathway. Studies of the mouse counterpart of this gene suggested that this kinase play a key role in T cell proliferation, apoptosis and differentiation. Four alternatively spliced transcript variants encoding distinct isoforms have been reported. [provided by RefSeq]

Other Designations

JNK1 alpha protein kinase|JNK1 beta protein kinase|JUN N-terminal kinase|OTTHUMP00000019552|OTTHUMP00000019555|OTTHUMP00000019556|OTTHUMP00000019558|c-Jun N-terminal kinase 1|mitogen-activated protein kinase 8 isoform JNK1 alpha1|mitogen-activated protein

Publication Reference

- [DNA damage-dependent translocation of B23 and p19 ARF is regulated by the Jun N-terminal kinase pathway.](#)

Yogev O, Saadon K, Anzi S, Inoue K, Shaulian E.

Cancer Research 2008 Mar; 68(5):1398.

Application: WB-Ce, Mouse, MEF cells

Pathway

- [Adipocytokine signaling pathway](#)
- [Colorectal cancer](#)
- [Epithelial cell signaling in Helicobacter pylori infection](#)
- [ErbB signaling pathway](#)
- [Fc epsilon RI signaling pathway](#)
- [Focal adhesion](#)
- [GnRH signaling pathway](#)
- [Insulin signaling pathway](#)
- [MAPK signaling pathway](#)
- [Neurotrophin signaling pathway](#)

- [Pancreatic cancer](#)
- [Pathways in cancer](#)
- [Toll-like receptor signaling pathway](#)
- [Type II diabetes mellitus](#)
- [Wnt signaling pathway](#)

Disease

- [Breast cancer](#)
- [Breast Neoplasms](#)
- [Cardiovascular Diseases](#)
- [Diabetes Mellitus](#)
- [Edema](#)
- [Genetic Predisposition to Disease](#)
- [HIV Infections](#)