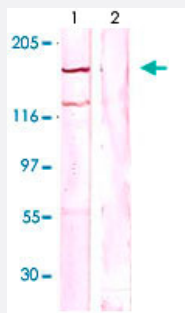


CSF1R (phospho Y723) polyclonal antibody

Catalog # PAB12618 Size 100 ug

Applications



Western Blot (Cell lysate)

The whole cell lysate derived from m-CSF stimulated LNCaP was immunoblotted by CSF1R (phospho Y723) polyclonal antibody (Cat # PAB12618) at 1 : 500. A major immune-reactive band is observed around ~ 150 kDa (Lane 1). This band is blocked by pre-incubation of immunizing peptide (Lane 2).

Specification

Product Description	Rabbit polyclonal antibody raised against synthetic phosphopeptide of CSF1R.
Immunogen	Synthetic phosphopeptide corresponding to residues surrounding Y723 of human CSF1R.
Sequence	DTYVEM
Host	Rabbit
Theoretical MW (kDa)	150
Reactivity	Human, Mouse
Specificity	This antibody recognizes ~150 kDa of human CSF1R at a phosphorylation site of Tyrosine 723. It does not recognize non-phosphorylated peptides.
Form	Liquid
Quality Control Testing	Antibody Reactive Against Synthetic Peptide.

Recommend Usage	Western Blot (0.1-1 ug/mL) ELISA (0.01-0.1 ug/mL) Immunoprecipitation (2-5 ug/mL) Immunohistochemistry (2-5 ug/mL) The optimal working dilution should be determined by the end user.
Storage Buffer	In TBS, pH 7.2 (BSA, 10% Proclin300)
Storage Instruction	Store at 4°C for three month. For long term storage store at -20°C to -80°C. Aliquot to avoid repeated freezing and thawing.

Applications

- Western Blot (Cell lysate)

The whole cell lysate derived from m-CSF stimulated LNCaP was immunoblotted by CSF1R (phospho Y723) polyclonal antibody (Cat # PAB12618) at 1 : 500. A major immune-reactive band is observed around ~ 150 KDa (Lane 1). This band is blocked by pre-incubation of immunizing peptide (Lane 2).

- Immunohistochemistry

- Immunoprecipitation

- Enzyme-linked Immunoabsorbent Assay

Gene Info — CSF1R

Entrez GeneID	1436
Gene Name	CSF1R
Gene Alias	C-FMS, CD115, CSFR, FIM2, FMS
Gene Description	colony stimulating factor 1 receptor
Omim ID	164770
Gene Ontology	Hyperlink

Gene Summary

The protein encoded by this gene is the receptor for colony stimulating factor 1, a cytokine which controls the production, differentiation, and function of macrophages. This receptor mediates most if not all of the biological effects of this cytokine. Ligand binding activates the receptor kinase through a process of oligomerization and transphosphorylation. The encoded protein is a tyrosine kinase transmembrane receptor and member of the CSF1/PDGF receptor family of tyrosine-protein kinases. Mutations in this gene have been associated with a predisposition to myeloid malignancy. The first intron of this gene contains a transcriptionally inactive ribosomal protein L7 processed pseudogene oriented in the opposite direction. [provided by RefSeq]

Other Designations

CD115 antigen|FMS proto-oncogene|McDonough feline sarcoma viral (v-fms) oncogene homolog|macrophage colony stimulating factor 1 receptor|soluble CSF1R variant 1

Publication Reference

- [The activated macrophage colony-stimulating factor \(CSF-1\) receptor as a predictor of poor outcome in advanced epithelial ovarian carcinoma.](#)

Toy EP, Chambers JT, Kacinski BM, Flick MB, Chambers SK.

Gynecol Oncol 2001 Feb; 80(2):194.

Application: IHC-P, Human, Breast carcinoma, Ovarian tumor

Pathway

- [Cytokine-cytokine receptor interaction](#)
- [Endocytosis](#)
- [Hematopoietic cell lineage](#)
- [Pathways in cancer](#)

Disease

- [Asthma](#)
- [Genetic Predisposition to Disease](#)
- [Heart Defects](#)
- [Lung Neoplasms](#)
- [Myelodysplastic Syndromes](#)
- [Pancreatic cancer](#)

- [Pancreatic Neoplasms](#)
- [Pulmonary Disease](#)
- [Purpura](#)
- [Tobacco Use Disorder](#)
- [Urinary Bladder Neoplasms](#)
- [Werner syndrome](#)