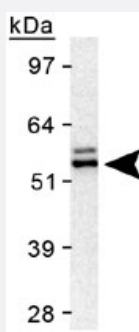


TERF2 polyclonal antibody

Catalog # PAB12598 Size 100 uL

Applications



Western Blot (Cell lysate)

Western blot analysis of TERF2 in HeLa nuclear extract using TERF2 polyclonal antibody (Cat #PAB12598).

Specification

Product Description	Rabbit polyclonal antibody raised against recombinant TERF2.
Immunogen	Recombinant protein corresponding to TERF2.
Host	Rabbit
Reactivity	Human
Form	Liquid
Quality Control Testing	Antibody Reactive Against Recombinant Protein.
Recommend Usage	Western Blot (1:2000-1:5000) Immunocytochemistry (1:50-1:200) Immunofluorescence (1:50-1:200) The optimal working dilution should be determined by the end user.
Storage Buffer	In Tris-glycine, 150 mM NaCl (0.1% BSA, 0.05% sodium azide)
Storage Instruction	Store at 4°C for short term. For long term storage store at -20°C. Aliquot to avoid repeated freezing and thawing.

Note

This product contains sodium azide: a POISONOUS AND HAZARDOUS SUBSTANCE which should be handled by trained staff only.

Applications

- **ChIP**
- **Western Blot (Cell lysate)**
Western blot analysis of TERF2 in HeLa nuclear extract using TERF2 polyclonal antibody (Cat #PAB12598).
- **Immunocytochemistry**
- **Immunofluorescence**

Publication Reference

- [Telomere protection by mammalian Pot1 requires interaction with Tpp1.](#)
Hockemeyer D, Palm W, Else T, Daniels JP, Takai KK, Ye JZ, Keegan CE, de Lange T, Hammer GD.
Nature Structural & Molecular Biology 2007 Aug; 14(8):754.
- [MDC1 accelerates nonhomologous end-joining of dysfunctional telomeres.](#)
Dimitrova N, de Lange T.
Genes & Development 2006 Dec; 20(23):3238.

Application: WB, Mouse, MEFs
- [Apollo, an Artemis-related nuclease, interacts with TRF2 and protects human telomeres in S phase.](#)
van Overbeek M, de Lange T.
Current Biology 2006 Jul; 16(13):1295.

Application: WB, Human, IMR90 cells
- [DNA processing is not required for ATM-mediated telomere damage response after TRF2 deletion.](#)
Celli GB, de Lange T.
Nature Cell Biology 2005 Jul; 7(7):712.

Application: IF, WB-Ce, Mouse, MEFs

- [TIN2 binds TRF1 and TRF2 simultaneously and stabilizes the TRF2 complex on telomeres.](#)

Ye JZ, Donigian JR, van Overbeek M, Loayza D, Luo Y, Krutchinsky AN, Chait BT, de Lange T.

The Journal of Biological Chemistry 2004 Nov; 279(45):47264.

Application: IF, WB, Human, HeLa cells