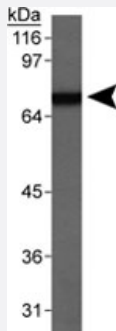


Scarb1 polyclonal antibody

Catalog # PAB12597 Size 100 uL

Applications



Western Blot (Tissue lysate)

Western blot analysis of Scarb1 (80kDa) from mouse testis lysate total protein using Scarb1 polyclonal antibody (Cat #PAB12597).

Specification

Product Description	Rabbit polyclonal antibody raised against recombinant Scarb1.
Immunogen	Recombinant protein corresponding to Scarb1.
Host	Rabbit
Reactivity	Human, Mouse
Specificity	This antibody is specific to SR-BI. It can block human SR-BI/Cla-1 (tested in HepG2 cells).
Form	Liquid
Quality Control Testing	Antibody Reactive Against Scarb1.
Recommend Usage	Immunoprecipitation (1:100) Blocking (1:500-1000) Immunocytochemistry (1:50-1:200) Immunofluorescence (1:50-1:200) The optimal working dilution should be determined by the end user.
Storage Buffer	In antiserum (0.05% sodium azide)

Storage Instruction

Store at -20°C or -80°C.
Aliquot to avoid repeated freezing and thawing.

Note

This product contains sodium azide: a POISONOUS AND HAZARDOUS SUBSTANCE which should be handled by trained staff only.

Applications

- Western Blot (Tissue lysate)

Western blot analysis of Scarb1 (80kDa) from mouse testis lysate total protein using Scarb1 polyclonal antibody (Cat #PAB12597).

- Immunocytochemistry

- Immunofluorescence

- Immunoprecipitation

- Blocking

Gene Info — Scarb1

Entrez GeneID[20778](#)**Gene Name**

Scarb1

Gene Alias

AI120173, CD36, Cd36l1, Cla-1, Cla1, D5Erd460e, SR-B1, SR-BI, SRBI, Srb1, mSR-BI

Gene Description

scavenger receptor class B, member 1

Gene Ontology[Hyperlink](#)**Gene Summary**

O

Other Designations

OTTMUSP00000026063|scavenger receptor class B type II|scavenger receptor class B1

Publication Reference

- [Increased cholesterol deposition, expression of scavenger receptors, and response to chemotactic factors in Abca1-deficient macrophages.](#)

Francone OL, Royer L, Boucher G, Haghpassand M, Freeman A, Brees D, Aiello RJ.

Arteriosclerosis, Thrombosis, and Vascular Biology 2005 Jun; 25(6):1198.

Application: Flow Cyt, Mouse, Peritoneal exudate cells

- [Different transport routes for high density lipoprotein and its associated free sterol in polarized hepatic cells.](#)

Wustner D, Mondal M, Huang A, Maxfield FR.

Journal of Lipid Research 2004 Mar; 45(3):427.

Application: Func, IF, Human, HepG2 cells

- [Scavenger receptor class B, type I-mediated \[3H\]cholesterol efflux to high and low density lipoproteins is dependent on lipoprotein binding to the receptor.](#)

Gu X, Kozarsky K, Krieger M.

The Journal of Biological Chemistry 2000 Sep; 275(39):29993.

Application: Func, IF, WB-Tr, Human, Monkey, COS M6, IdIA-7 cells