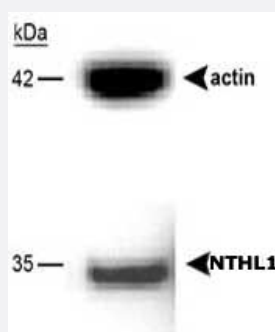


NTHL1 polyclonal antibody

Catalog # PAB12565 Size 100 uL

Applications



Western Blot (Cell lysate)

Western blot analysis of NTHL1 in A-549 cells using NTHL1 polyclonal antibody (Cat # PAB12565). A band is seen at 35 kDa representing NTH1.

Specification

Product Description	Rabbit polyclonal antibody raised against full length recombinant NTHL1.
Immunogen	Recombinant protein corresponding to full length NTHL1.
Host	Rabbit
Reactivity	Human
Form	Liquid
Recommend Usage	Western Blot (1:1000-1:5000) The optimal working dilution should be determined by the end user.
Storage Buffer	In antiserum (0.09% sodium azide)
Storage Instruction	Store at -20°C or -80°C. Aliquot to avoid repeated freezing and thawing.
Note	This product contains sodium azide: a POISONOUS AND HAZARDOUS SUBSTANCE which should be handled by trained staff only.

Applications

- Western Blot (Cell lysate)

Western blot analysis of NTHL1 in A-549 cells using NTHL1 polyclonal antibody (Cat # PAB12565). A band is seen at 35 kDa representing NTH1.