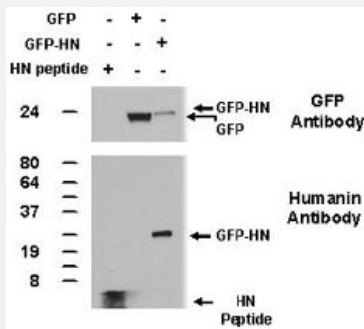


Humanin polyclonal antibody

Catalog # PAB12551 Size 100 uL

Applications



Western Blot (Transfected lysate)

Western blot performed from 100ng of synthetic Humanin peptide and from 50 ug of total lysates of 293 cells transfected with plasmids encoding GFPc1 or GFP-Humanin using Humanin polyclonal antibody (Cat # PAB12551).

Specification

Product Description	Rabbit polyclonal antibody raised against synthetic peptide of RNR2.
Immunogen	A synthetic peptide corresponding to amino acids 9-24 of human RNR2.
Sequence	LLLLTSEIDLVPVKRRA
Host	Rabbit
Reactivity	Human
Specificity	This antibody is specific to humanin.
Form	Liquid
Quality Control Testing	Antibody Reactive Against Synthetic Peptide.
Recommend Usage	Western Blot (1:500) The optimal working dilution should be determined by the end user.
Storage Buffer	In buffer containing 0.02% sodium azide
Storage Instruction	Store at 4°C for short term. For long term storage store at -20°C. Aliquot to avoid repeated freezing and thawing.

Note

This product contains sodium azide: a POISONOUS AND HAZARDOUS SUBSTANCE which should be handled by trained staff only.

Applications

- Western Blot (Transfected lysate)

Western blot performed from 100ng of synthetic Humanin peptide and from 50 ug of total lysates of 293 cells transfected with plasmids encoding GFPc1 or GFP-Humanin using Humanin polyclonal antibody (Cat # PAB12551).

Publication Reference

- [CLAC: a novel Alzheimer amyloid plaque component derived from a transmembrane precursor, CLAC-P/collagen type XXV.](#)

Hashimoto T, Wakabayashi T, Watanabe A, Kowa H, Hosoda R, Nakamura A, Kanazawa I, Arai T, Takio K, Mann DM, Iwatsubo T.

The EMBO Journal 2002 Apr; 21(7):1524.