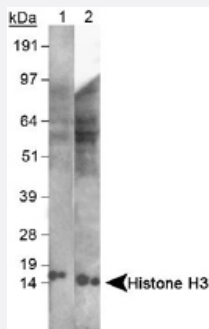


# Histone H3 polyclonal antibody

Catalog # PAB12532      Size 100 uL

## Applications



### Western Blot (Cell lysate)

Western blot analysis of Histone H3 in lysates using Histone H3 polyclonal antibody (Cat # PAB12532). Lane 1 : MEF. Lane 2 : HeLa.

## Specification

<b>Product Description</b>	Rabbit polyclonal antibody raised against synthetic peptide of HIST3H3.
<b>Immunogen</b>	A synthetic peptide corresponding to amino acids 100-200 of human Histone H3.
<b>Host</b>	Rabbit
<b>Reactivity</b>	Human
<b>Specificity</b>	This antibody is specific to Histone H3.
<b>Form</b>	Liquid
<b>Quality Control Testing</b>	Antibody Reactive Against Synthetic Peptide.
<b>Recommend Usage</b>	Western Blot (1:500-1:1000) The optimal working dilution should be determined by the end user.
<b>Storage Buffer</b>	In PBS (0.02% sodium azide)
<b>Storage Instruction</b>	Store at -20°C or -80°C. Aliquot to avoid repeated freezing and thawing.

**Note**

This product contains sodium azide: a POISONOUS AND HAZARDOUS SUBSTANCE which should be handled by trained staff only.

## Applications

- Western Blot (Cell lysate)

Western blot analysis of Histone H3 in lysates using Histone H3 polyclonal antibody (Cat # PAB12532). Lane 1 : MEF. Lane 2 : HeLa.

## Publication Reference

- [ICBP90, a novel methyl K9 H3 binding protein linking protein ubiquitination with heterochromatin formation.](#)

Karagianni P, Amazit L, Qin J, Wong J.

Molecular and Cellular Biology 2008 Jan; 28(2):705.

Application: WB-Tr, Human, HEK 293T cells