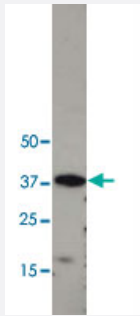


# CYR61 polyclonal antibody

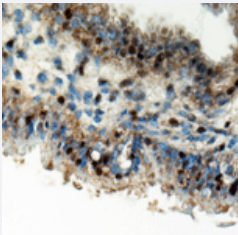
Catalog # PAB12525      Size 100 uL

## Applications



### Western Blot (Cell lysate)

Western blot analysis of cleaved CYR61 in MDA-MB-231 cell lysate using CYR61 polyclonal antibody (Cat # PAB12525). Photo courtesy of Dr. Lupu's Lab, Northwestern University. Image by Dr. Ingrid Espinoza.



### Immunohistochemistry

Staining of CYR61 on human endometrium using CYR61 polyclonal antibody (Cat # PAB12525). Photo courtesy of Dr. rer. nat. Isabella Gashaw, University Duisburg-Essen.

## Specification

<b>Product Description</b>	Rabbit polyclonal antibody raised against synthetic peptide of CYR61.
<b>Immunogen</b>	A synthetic peptide corresponding to amino acids 150-250 of human CYR61.
<b>Host</b>	Rabbit
<b>Theoretical MW (kDa)</b>	37
<b>Reactivity</b>	Human
<b>Specificity</b>	This antibody is specific to CYR61 protein.
<b>Form</b>	Liquid

<b>Purification</b>	Immunogen affinity purification
<b>Recommend Usage</b>	Immunocytochemistry/Immunofluorescence (1:10-1:500) Immunohistochemistry (Formalin/PFA-fixed paraffin-embedded sections) (1:100) Western Blot (1:200) The optimal working dilution should be determined by the end user.
<b>Storage Buffer</b>	In PBS (0.02% sodium azide).
<b>Storage Instruction</b>	Store at 4°C for short term. For long term storage, store at -20°C. Aliquot to avoid repeated freezing and thawing.
<b>Note</b>	This product contains sodium azide: a POISONOUS AND HAZARDOUS SUBSTANCE which should be handled by trained staff only.

## Applications

- Western Blot (Cell lysate)

Western blot analysis of cleaved CYR61 in MDA-MB-231 cell lysate using CYR61 polyclonal antibody (Cat # PAB12525). Photo courtesy of Dr. Lupu's Lab, Northwestern University. Image by Dr. Ingrid Espinoza.

- Immunohistochemistry (Formalin/PFA-fixed paraffin-embedded sections)

- Immunohistochemistry

Staining of CYR61 on human endometrium using CYR61 polyclonal antibody (Cat # PAB12525). Photo courtesy of Dr. rer. nat. Isabella Gashaw, University Duisburg-Essen.

- Immunocytochemistry

- Immunofluorescence

## Gene Info — CYR61

<b>Entrez GeneID</b>	<a href="#">3491</a>
<b>Protein Accession#</b>	<a href="#">O00622</a>
<b>Gene Name</b>	CYR61
<b>Gene Alias</b>	CCN1, GIG1, IGFBP10
<b>Gene Description</b>	cysteine-rich, angiogenic inducer, 61
<b>Omim ID</b>	<a href="#">602369</a>

## Gene Ontology

[Hyperlink](#)

## Gene Summary

CYR61 is a secreted, cysteine-rich, heparin-binding protein encoded by a growth factor-inducible immediate-early gene. Acting as an extracellular, matrix-associated signaling molecule, CYR61 promotes the adhesion of endothelial cells through interaction with integrin and augments growth factor-induced DNA synthesis in the same cell type.[supplied by OMIM]

## Other Designations

OTTHUMP00000012303|cysteine-rich heparin-binding protein 61|cysteine-rich, angiogenic inducer, 61

## Publication Reference

- [Premenstrual regulation of the pro-angiogenic factor CYR61 in human endometrium.](#)

Gashaw I, Stiller S, Boing C, Kimmig R, Winterhager E.

Endocrinology 2008 May; 149(5):2261.

Application: IF, WB, Human , Human endometrium

## Disease

- [Breast cancer](#)
- [Breast Neoplasms](#)
- [Genetic Predisposition to Disease](#)
- [Metabolic Syndrome X](#)
- [Obesity](#)
- [Ovarian Neoplasms](#)