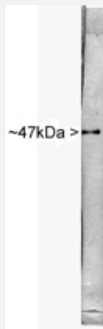


ENO2 polyclonal antibody

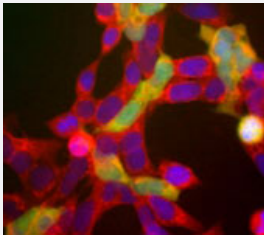
Catalog # PAB12508 Size 100 uL

Applications



Western Blot (Tissue lysate)

Western blot of ENO2 in rat spinal cord probed with ENO2 polyclonal antibody (Cat # PAB12508). The antibody stains a single sharp band corresponding to NSE at about 47kDa.



Immunofluorescence

The red channel shows staining which recognizes all of these 293 cells. The green channels shows staining for another neuronal marker to ENO2 using ENO2 polyclonal antibody (Cat # PAB12508). This neuronal gene is apparently activated in a cell density dependent fashion and at this stage only a few cells express this protein. However all cells that express NSE also express UCHL1.

Specification

Product Description	Rabbit polyclonal antibody raised against full length recombinant ENO2.
Immunogen	Recombinant protein corresponding to full length human ENO2.
Host	Rabbit
Reactivity	Human, Rat
Form	Liquid
Quality Control Testing	Antibody Reactive Against Recombinant Protein.

Recommend Usage	Immunofluorescence (1:500) Western Blot (1:1000) The optimal working dilution should be determined by the end user.
Storage Buffer	In antiserum (10 mM sodium azide)
Storage Instruction	Store at 4°C for short term. For long term storage store at -20°C. Aliquot to avoid repeated freezing and thawing.
Note	This product contains sodium azide: a POISONOUS AND HAZARDOUS SUBSTANCE which should be handled by trained staff only.

Applications

- Western Blot (Tissue lysate)

Western blot of ENO2 in rat spinal cord probed with ENO2 polyclonal antibody (Cat # PAB12508). The antibody stains a single sharp band corresponding to NSE at about 47kDa.

- Immunofluorescence

The red channel shows staining which recognizes all of these 293 cells. The green channels shows staining for another neuronal marker to ENO2 using ENO2 polyclonal antibody (Cat # PAB12508). This neuronal gene is apparently activated in a cell density dependent fashion and at this stage only a few cells express this protein. However all cells that express NSE also express UCHL1.

Gene Info — ENO2

Entrez GeneID	2026
Gene Name	ENO2
Gene Alias	NSE
Gene Description	enolase 2 (gamma, neuronal)
Omim ID	131360
Gene Ontology	Hyperlink
Gene Summary	This gene encodes one of the three enolase isoenzymes found in mammals. This isoenzyme, a homodimer, is found in mature neurons and cells of neuronal origin. A switch from alpha enolase to gamma enolase occurs in neural tissue during development in rats and primates. [provided by RefSeq]
Other Designations	2-phospho-D-glycerate hydrolyase enolase 2 neural enolase neuron specific gamma enolase neuron-specific enolase

Publication Reference

- [Serum biochemical markers for post-concussion syndrome in patients with mild traumatic brain injury.](#)
Begaz T, Kyriacou DN, Segal J, Bazarian JJ.
Journal of Neurotrauma 2006 Aug; 23(8):1201.
- [Preferential transformation of human neuronal cells by human adenoviruses and the origin of HEK 293 cells.](#)
Shaw G, Morse S, Ararat M, Graham FL.
FASEB Journal 2002 Apr; 16(8):869.

Pathway

- [Biosynthesis of alkaloids derived from histidine and purine](#)
- [Biosynthesis of alkaloids derived from ornithine](#)
- [Biosynthesis of alkaloids derived from shikimate pathway](#)
- [Biosynthesis of alkaloids derived from terpenoid and polyketide](#)
- [Biosynthesis of phenylpropanoids](#)
- [Biosynthesis of plant hormones](#)
- [Biosynthesis of terpenoids and steroids](#)
- [Glycolysis / Gluconeogenesis](#)
- [Metabolic pathways](#)
- [RNA degradation](#)

Disease

- [Alzheimer disease](#)
- [Cerebral Amyloid Angiopathy](#)
- [Genetic Predisposition to Disease](#)
- [Neuroblastoma](#)

- [Schizophrenia](#)