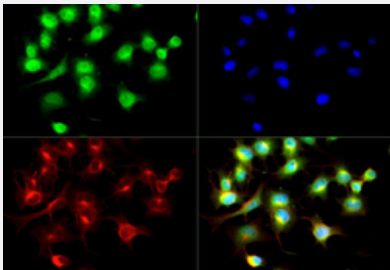


## CIC polyclonal antibody

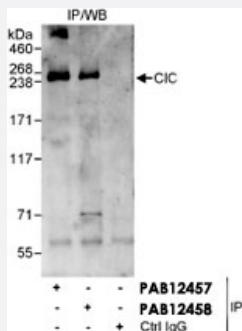
Catalog # PAB12457      Size 100 ug

### Applications



#### Immunofluorescence

Immunofluorescent staining of CIC polyclonal antibody (Cat # PAB12457) was tested in Neuro 2A cells with DyLight 488 (green). Nuclei and alpha-tubulin were counterstained with DAPI (blue) and DyLight 550 (red).



#### Immunoprecipitation

Detection of Human CIC/Capicua by Western blot of Immunoprecipitates. Whole cell lysate from HeLa cells. CIC polyclonal antibody (Cat # PAB12457) used for IP at 3 mcg/mg lysate. CIC was also IPed by rabbit anti-CICa antibody.

### Specification

<b>Product Description</b>	Rabbit polyclonal antibody raised against partial recombinant CIC.
<b>Immunogen</b>	Recombinant protein corresponding to a region within residue 1150-1200 of human CIC.
<b>Host</b>	Rabbit
<b>Theoretical MW (kDa)</b>	164
<b>Reactivity</b>	Dog, Human, Mouse, Rat
<b>Form</b>	Liquid
<b>Purification</b>	Immunogen affinity purification

<b>Recommend Usage</b>	Immunocytochemistry (1:500) Immunofluorescence (1:500) Immunoprecipitation (2-5 ug/mg lysate) The optimal working dilution should be determined by the end user. It is not recommended for Western blot analysis.
<b>Storage Buffer</b>	In PBS (0.02% sodium azide).
<b>Storage Instruction</b>	Store at 4°C for short term. For long term storage, aliquot and store at -20°C. Aliquot to avoid repeated freezing and thawing.
<b>Note</b>	This product contains sodium azide: a POISONOUS AND HAZARDOUS SUBSTANCE which should be handled by trained staff only.

## Applications

- Immunocytochemistry

- Immunofluorescence

Immunofluorescent staining of CIC polyclonal antibody (Cat # PAB12457) was tested in Neuro 2A cells with DyLight 488 (green). Nuclei and alpha-tubulin were counterstained with DAPI (blue) and DyLight 550 (red).

- Immunoprecipitation

Detection of Human CIC/Capicua by Western blot of Immunoprecipitates. Whole cell lysate from HeLa cells. CIC polyclonal antibody (Cat # PAB12457) used for IP at 3 mcg/mg lysate. CIC was also IPed by rabbit anti-CICa antibody.

## Gene Info — CIC

<b>Entrez GeneID</b>	<a href="#">23152</a>
<b>Protein Accession#</b>	<a href="#">NP_055940.3; Q96RK0</a>
<b>Gene Name</b>	CIC
<b>Gene Alias</b>	KIAA0306
<b>Gene Description</b>	capicua homolog (Drosophila)
<b>Gene Ontology</b>	<a href="#">Hyperlink</a>
<b>Other Designations</b>	capicua homolog

## Disease

- [Cardiovascular Diseases](#)
- [Diabetes Mellitus](#)
- [Edema](#)