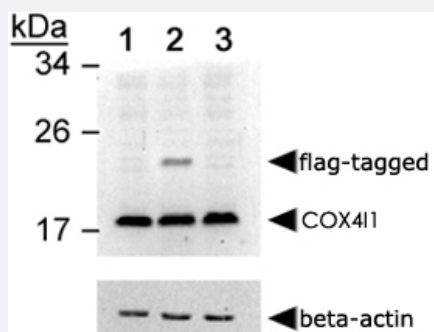


COX4I1 polyclonal antibody

Catalog # PAB12455 Size 100 uL

Applications



Western Blot (Recombinant protein)

Western blot analysis of COX4I1 using COX4I1 polyclonal antibody (Cat # PAB12455). Lane 1 : HEK 293 with empty vector. Lane 2 : HEK 293 with flag-tagged human COX4I1. Lane 3 : HEK 293 with flag-tagged human COX4I2. Photo courtesy of Ryo Fukuda, G. Semenza lab. Johns Hopkins, SOM.

Specification

Product Description	Rabbit polyclonal antibody raised against synthetic peptide of COX4I1.
Immunogen	A synthetic peptide corresponding to amino acids 1-100 of human COX4I1.
Host	Rabbit
Reactivity	Bovine, Human, Mouse, Primates, Rat
Specificity	This antibody is specific to COX4I1.
Form	Liquid
Quality Control Testing	Antibody Reactive Against Synthetic Peptide.
Recommend Usage	Western Blot (1:2000) The optimal working dilution should be determined by the end user.
Storage Buffer	In Tris-glycine, 150 mM NaCl (0.05% sodium azide)
Storage Instruction	Store at -20°C or -80°C. Aliquot to avoid repeated freezing and thawing.

Note

This product contains sodium azide: a POISONOUS AND HAZARDOUS SUBSTANCE which should be handled by trained staff only.

Applications

- Western Blot (Recombinant protein)

Western blot analysis of COX4I1 using COX4I1 polyclonal antibody (Cat # PAB12455). Lane 1 : HEK 293 with empty vector. Lane 2 : HEK 293 with flag-tagged human COX4I1. Lane 3 : HEK 293 with flag-tagged human COX4I2. Photo courtesy of Ryo Fukuda, G. Semenza lab. Johns Hopkins, SOM.

Gene Info — COX4I1

Entrez GeneID [1327](#)

Protein Accession# [P13073](#)

Gene Name COX4I1

Gene Alias COX4, COXIV, MGC72016

Gene Description cytochrome c oxidase subunit IV isoform 1

Omim ID [123864](#)

Gene Ontology [Hyperlink](#)

Gene Summary Cytochrome c oxidase (COX) is the terminal enzyme of the mitochondrial respiratory chain. It is a multi-subunit enzyme complex that couples the transfer of electrons from cytochrome c to molecular oxygen and contributes to a proton electrochemical gradient across the inner mitochondrial membrane. The complex consists of 13 mitochondrial- and nuclear-encoded subunits. The mitochondrially-encoded subunits perform the electron transfer and proton pumping activities. The functions of the nuclear-encoded subunits are unknown but they may play a role in the regulation and assembly of the complex. This gene encodes the nuclear-encoded subunit IV isoform 1 of the human mitochondrial respiratory chain enzyme. It is located at the 3' of the NOC4 (neighbor of COX4) gene in a head-to-head orientation, and shares a promoter with it. [provided by RefSeq]

Other Designations -

Pathway

- [Cardiac muscle contraction](#)
- [Metabolic pathways](#)

- [Oxidative phosphorylation](#)