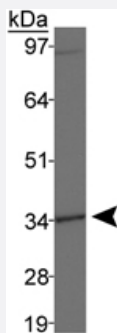


# DLX4 polyclonal antibody

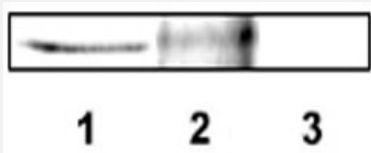
Catalog # PAB12448      Size 100 uL

## Applications



### Western Blot (Cell lysate)

Western blot analysis of DLX4 in MDA-MB-231 cell lysates using DLX4 polyclonal antibody (Cat # PAB12448).



### Western Blot

Western blot analysis of DLX4 using DLX4 polyclonal antibody (Cat # PAB12448).

Lane 1 : DLX4-specific band (36 KDa) from 10ug of cell extract with antibody diluted 1 : 5 000.

Lane 2 : DLX4-specific band after immunoprecipitation of 850 ug of cell extract using DLX4 polyclonal antibody (Cat # PAB12448) at 1 : 1000.

Lane 3 : Negative control for IP in lane 2; cell extract incubated with 50 uL of Protein A/G beads.

## Specification

<b>Product Description</b>	Rabbit polyclonal antibody raised against synthetic peptide of DLX4.
<b>Immunogen</b>	A synthetic peptide corresponding to amino acids 1-60 of human DLX4.
<b>Host</b>	Rabbit
<b>Reactivity</b>	Human
<b>Specificity</b>	This antibody is specific to human BP1.
<b>Form</b>	Liquid

<b>Recommend Usage</b>	Immunohistochemistry (1:50-1:100) The optimal working dilution should be determined by the end user.
<b>Storage Buffer</b>	In Tris-citrate/phosphate buffer, pH 7.0-8.0 (0.09% sodium azide)
<b>Storage Instruction</b>	Store at 4°C. Do not freeze.
<b>Note</b>	This product contains sodium azide: a POISONOUS AND HAZARDOUS SUBSTANCE which should be handled by trained staff only.

## Applications

- Western Blot (Cell lysate)

Western blot analysis of DLX4 in MDA-MB-231 cell lysates using DLX4 polyclonal antibody (Cat # PAB12448).

- Western Blot

Western blot analysis of DLX4 using DLX4 polyclonal antibody (Cat # PAB12448).

Lane 1 : DLX4-specific band (36 KDa) from 10ug of cell extract with antibody diluted 1 : 5 000.

Lane 2 : DLX4-specific band after immunoprecipitation of 850 ug of cell extract using DLX4 polyclonal antibody (Cat # PAB12448) at 1 : 1000.

Lane 3 : Negative control for IP in lane 2; cell extract incubated with 50 uL of Protein A/G beads.

- Immunohistochemistry

## Gene Info — DLX4

<b>Entrez GeneID</b>	<a href="#">1748</a>
<b>Protein Accession#</b>	<a href="#">Q92988</a>
<b>Gene Name</b>	DLX4
<b>Gene Alias</b>	BP1, DLX7, DLX8, DLX9
<b>Gene Description</b>	distal-less homeobox 4
<b>Omim ID</b>	<a href="#">601911</a>
<b>Gene Ontology</b>	<a href="#">Hyperlink</a>

## Gene Summary

Many vertebrate homeo box-containing genes have been identified on the basis of their sequence similarity with Drosophila developmental genes. Members of the Dlx gene family contain a homeo box that is related to that of Distal-less (Dll), a gene expressed in the head and limbs of the developing fruit fly. The Distal-less (Dlx) family of genes comprises at least 6 different members, DLX1-DLX6. The DLX proteins are postulated to play a role in forebrain and craniofacial development. Three transcript variants have been described for this gene, however, the full length nature of one variant has not been described. Studies of the two splice variants revealed that one encoded isoform functions as a repressor of the beta-globin gene while the other isoform lacks that function. [provided by RefSeq]

## Other Designations

beta protein 1|distal-less homeo box 7|distal-less homeo box 9

## Publication Reference

- [BP1 transcriptionally activates bcl-2 and inhibits TNFalpha-induced cell death in MCF7 breast cancer cells.](#)

Stevenson HS, Fu SW, Pinzone JJ, Rheey J, Simmens SJ, Berg PE.

Breast Cancer Research 2007 Sep; 9(5):R60.

Application: Func, WB, Human, MCF-7 cells, Recombinant protein

- [Correlation of expression of BP1, a homeobox gene, with estrogen receptor status in breast cancer.](#)

Fu SW, Schwartz A, Stevenson H, Pinzone JJ, Davenport GJ, Orenstein JM, Gutierrez P, Simmens SJ, Abraham J, Poola I, Stephan DA, Berg PE.

Breast Cancer Research 2003 Apr; 5(4):R82.

- [BP1, a homeodomain-containing isoform of DLX4, represses the beta-globin gene.](#)

Chase MB, Fu S, Haga SB, Davenport G, Stevenson H, Do K, Morgan D, Mah AL, Berg PE.

Molecular and Cellular Biology 2002 Apr; 22(8):2505.

Application: WB-Ce, Human, K562 cells

## Disease

- [Cleft Lip](#)
- [Cleft Palate](#)
- [Tooth Abnormalities](#)