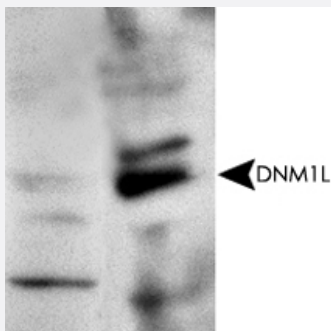


# DNM1L polyclonal antibody

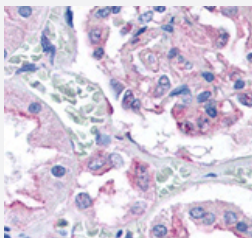
Catalog # PAB12447      Size 100 uL

## Applications



### Western Blot (Cell lysate)

Western blot analysis with DNM1L polyclonal antibody (Cat # PAB12447) at 1 : 500x dilution. Lane 1 : DNM1L knockout. Lane 2 : DNM1L wildtype MEF.



### Immunohistochemistry

Staining of DNM1L on human kidney cortex renal tubular epithelium and visceral epithelial cells of the glomerulus using DNM1L polyclonal antibody (Cat # PAB12447) at 2.5 ug/mL.

## Specification

<b>Product Description</b>	Rabbit polyclonal antibody raised against synthetic peptide of DNM1L.
<b>Immunogen</b>	A synthetic peptide corresponding to amino acids 500-600 of human DNM1L.
<b>Host</b>	Rabbit
<b>Reactivity</b>	Bovine, Human, Mouse, Primates, Rat
<b>Form</b>	Liquid
<b>Quality Control Testing</b>	Antibody Reactive Against Synthetic Peptide.
<b>Recommend Usage</b>	The optimal working dilution should be determined by the end user.

<b>Storage Buffer</b>	In Tris-glycine, 150 mM NaCl (0.05% sodium azide)
<b>Storage Instruction</b>	Store at -20°C or -80°C. Aliquot to avoid repeated freezing and thawing.
<b>Note</b>	This product contains sodium azide: a POISONOUS AND HAZARDOUS SUBSTANCE which should be handled by trained staff only.

## Applications

- Western Blot (Cell lysate)

Western blot analysis with DNM1L polyclonal antibody (Cat # PAB12447) at 1 : 500x dilution. Lane 1 : DNM1L knockout. Lane 2 : DNM1L wildtype MEF.

- Immunohistochemistry

Staining of DNM1L on human kidney cortex renal tubular epithelium and visceral epithelial cells of the glomerulus using DNM1L polyclonal antibody (Cat # PAB12447) at 2.5 ug/mL.

## Gene Info — DNM1L

<b>Entrez GeneID</b>	<a href="#">10059</a>
<b>Protein Accession#</b>	<a href="#">O00429</a>
<b>Gene Name</b>	DNM1L
<b>Gene Alias</b>	DLP1, DRP1, DVLP, DYMPLE, DYNIV-11, FLJ41912, HDYNIV, VPS1
<b>Gene Description</b>	dynammin 1-like
<b>Omim ID</b>	<a href="#">603850</a>
<b>Gene Ontology</b>	<a href="#">Hyperlink</a>
<b>Gene Summary</b>	The protein encoded by this gene is a member of the dynamin superfamily of GTPases. Members of the dynamin-related subfamily, including the <i>S. cerevisiae</i> proteins Dnm1 and Vps1, contain the N-terminal tripartite GTPase domain but do not have the pleckstrin homology or proline-rich domains. This protein establishes mitochondrial morphology through a role in distributing mitochondrial tubules throughout the cytoplasm. The gene has 3 alternatively spliced transcripts encoding different isoforms. These transcripts are alternatively polyadenylated. [provided by RefSeq]
<b>Other Designations</b>	Dnm1p/Vps1p-like protein dynammin 1-like protein dynammin family member proline-rich carboxyl-terminal domain less dynammin-like protein 4 dynammin-like protein IV dynammin-related protein 1

## Publication Reference

- [An mtDNA mutation accelerates liver aging by interfering with the ROS response and mitochondrial life cycle.](#)

Niemann J, Johne C, Schröder S, Koch F, Ibrahim SM, Schultz J, Tiedge M, Baltrusch S.

Free Radical Biology & Medicine 2016 Nov; 102:174.

Application: WB, Mouse, Mouse hepatocytes

## Pathway

- [Endocytosis](#)
- [Fc gamma R-mediated phagocytosis](#)

## Disease

- [Tobacco Use Disorder](#)