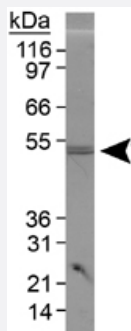


# PLIN3 polyclonal antibody

Catalog # PAB12391      Size 100 uL

## Applications



### Western Blot (Cell lysate)

Western blot analysis of PLIN3 in 3T3-L1 lysate using PLIN3 polyclonal antibody (Cat # PAB12391).

## Specification

<b>Product Description</b>	Rabbit polyclonal antibody raised against synthetic peptide of PLIN3.
<b>Immunogen</b>	A synthetic peptide corresponding to amino acids 350-435 of human PLIN3.
<b>Host</b>	Rabbit
<b>Reactivity</b>	Human, Mouse, Pig, Primates
<b>Form</b>	Liquid
<b>Quality Control Testing</b>	Antibody Reactive Against Synthetic Peptide.
<b>Recommend Usage</b>	Western Blot (2 ug/mL) The optimal working dilution should be determined by the end user.
<b>Storage Buffer</b>	In Tris-glycine, 150 mM NaCl (0.05% sodium azide)
<b>Storage Instruction</b>	Store at -20°C or -80°C. Aliquot to avoid repeated freezing and thawing.
<b>Note</b>	This product contains sodium azide: a POISONOUS AND HAZARDOUS SUBSTANCE which should be handled by trained staff only.

## Applications

- Western Blot (Cell lysate)

Western blot analysis of PLIN3 in 3T3-L1 lysate using PLIN3 polyclonal antibody (Cat # PAB12391).

## Gene Info — PLIN3

Entrez GeneID [10226](#)

Protein Accession# [O60664](#)

Gene Name PLIN3

Gene Alias MGC11117, MGC2012, PP17, TIP47, M6PRBP1

Gene Description mannose-6-phosphate receptor binding protein 1

Omim ID [602702](#)

Gene Ontology [Hyperlink](#)

**Gene Summary** Mannose 6-phosphate receptors (MPRs) deliver lysosomal hydrolase from the Golgi to endosome and then return to the Golgi complex. The protein encoded by this gene interacts with the cytoplasmic domains of both cation-independent and cation-dependent MPRs, and is required for endosome-to-Golgi transport. This protein also binds directly to the GTPase RAB9 (RAB9A), a member of the RAS oncogene family. The interaction with RAB9 has been shown to increase the affinity of this protein for its cargo. Multiple transcript variants encoding different isoforms have been found for this gene

**Other Designations** MPR-BINDING PROTEIN, 47-KD|MPR-binding protein 47 kDa|cargo selection protein (mannose 6 phosphate receptor binding protein)|cargo selection protein TIP47|mannose 6 phosphate receptor binding protein 1|placental protein 17|tail-interacting protein, 47 kD

## Publication Reference

- [Retinyl ester homeostasis in the adipose differentiation-related protein-deficient retina.](#)

Imanishi Y, Sun W, Maeda T, Maeda A, Palczewski K.

The Journal of Biological Chemistry 2008 Sep; 283(36):25091.

Application: WB-Ti, Mouse, Mouse heart, white adipose tissue (WAT) homogenates, retinal pigmented epithelium

- [S3-12, Adipophilin, and TIP47 package lipid in adipocytes.](#)

Wolins NE, Quaynor BK, Skinner JR, Schoenfish MJ, Tzekov A, Bickel PE.

The Journal of Biological Chemistry 2005 May; 280(19):19146.

Application: IF, WB-Tr, Human, Mouse, 3T3-L1, HeLa, HIB-1B cells

- [TIP47: a cargo selection device for mannose 6-phosphate receptor trafficking.](#)

Diaz E, Pfeffer SR.

Cell 1998 May; 93(3):433.

Application: IF, WB-Ce, Human, Monkey, Cow, K562, EBTr, COS cells