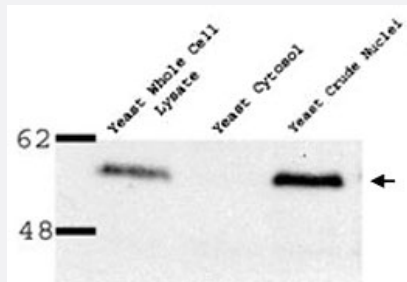


NUP53 polyclonal antibody

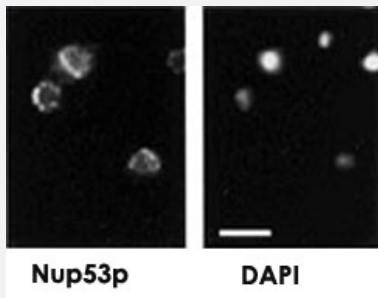
Catalog # PAB12343 Size 100 uL

Applications



Western Blot (Cell lysate)

Western blot of Nup53p polyclonal antibody (Cat # PAB12343) on yeast preparation.



Immunofluorescence

Immunofluorescence showing Nup53p polyclonal antibody (Cat # PAB12343) on yeast.

Specification

Product Description	Rabbit polyclonal antibody raised against recombinant NUP53.
Immunogen	Recombinant protein corresponding to Yeast NUP53.
Host	Rabbit
Reactivity	Yeast
Specificity	Yeast Nup53p.
Form	Liquid
Quality Control Testing	Antibody Reactive Against Recombinant Protein.

Recommend Usage	Western Blot (1:1000) The optimal working dilution should be determined by the end user.
Storage Buffer	In antiserum (0.09% sodium azide)
Storage Instruction	Store at 4°C. For long term storage store at -20°C. Aliquot to avoid repeated freezing and thawing.
Note	This product contains sodium azide: a POISONOUS AND HAZARDOUS SUBSTANCE which should be handled by trained staff only.

Applications

- Western Blot (Cell lysate)

Western blot of Nup53p polyclonal antibody (Cat # PAB12343) on yeast preparation.

- Immunofluorescence

Immunofluorescence showing Nup53p polyclonal antibody (Cat # PAB12343) on yeast.

Gene Info — NUP53

Entrez GeneID	855184
Gene Name	NUP53
Gene Alias	-
Gene Description	Nup53p
Gene Ontology	Hyperlink
Gene Summary	interacts with karyopherin Kap121p or with Nup170p via overlapping regions of Nup53p
Other Designations	Subunit of the nuclear pore complex (NPC), interacts with karyopherin Kap121p or with Nup170p via overlapping regions of Nup53p, involved in activation of the spindle checkpoint mediated by the Mad1p-Mad2p complex

Publication Reference

- [Vertebrate Nup53 interacts with the nuclear lamina and is required for the assembly of a Nup93-containing complex.](#)

Hawryluk-Gara LA, Shibuya EK, Wozniak RW.

Molecular Biology of the Cell 2005 Feb; 16(5):2382.

Application: IF, WB, Human, Rat, HeLa cells, Rat livers