

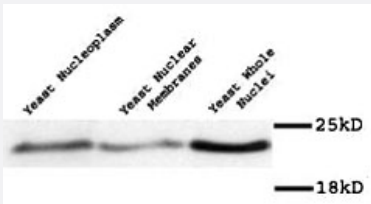
# MAD2 polyclonal antibody

Catalog # PAB12342      Size 100 uL

## Applications

### Western Blot (Cell lysate)

Western blot of Mad2p polyclonal antibody (Cat # PAB12342) on yeast preparation.



## Specification

<b>Product Description</b>	Rabbit polyclonal antibody raised against recombinant MAD2.
<b>Immunogen</b>	Recombinant His6 fusion protein corresponding to Yeast MAD2.
<b>Host</b>	Rabbit
<b>Reactivity</b>	Yeast
<b>Specificity</b>	Yeast Mad2p.
<b>Form</b>	Liquid
<b>Quality Control Testing</b>	Antibody Reactive Against Recombinant Protein.
<b>Recommend Usage</b>	Western Blot (1:100) The optimal working dilution should be determined by the end user.
<b>Storage Buffer</b>	In antiserum (0.09% sodium azide)
<b>Storage Instruction</b>	Store at 4°C. For long term storage store at -20°C. Aliquot to avoid repeated freezing and thawing.

**Note**

This product contains sodium azide: a POISONOUS AND HAZARDOUS SUBSTANCE which should be handled by trained staff only.

## Applications

- Western Blot (Cell lysate)

Western blot of Mad2p polyclonal antibody (Cat # PAB12342) on yeast preparation.

- Immunofluorescence

## Gene Info — MAD2

Entrez GeneID	<a href="#">853422</a>
---------------	------------------------

Gene Name	MAD2
-----------	------

Gene Alias	-
------------	---

Gene Description	Component of the spindle-assembly checkpoint complex, which delays the onset of anaphase in cells with defects in mitotic spindle assembly; forms a complex with Mad1p
------------------	--

Gene Ontology	<a href="#">Hyperlink</a>
---------------	---------------------------

Gene Summary	Mad2p
--------------	-------

Other Designations	Mad2p
--------------------	-------