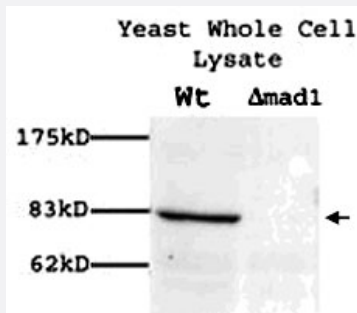


MAD1 polyclonal antibody

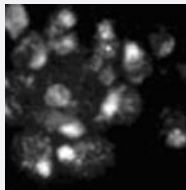
Catalog # PAB12341 Size 100 uL

Applications



Western Blot (Cell lysate)

Western blot showing Mad1p polyclonal antibody (Cat # PAB12341) (1 : 100) on yeast whole cell lysate.



Immunofluorescence

Immunofluorescence showing Mad1p polyclonal antibody (Cat # PAB12341) on yeast.

Specification

Product Description	Rabbit polyclonal antibody raised against recombinant MAD1.
Immunogen	Recombinant GST fusion protein corresponding to Yeast MAD1.
Host	Rabbit
Reactivity	Yeast
Specificity	Yeast Mad1p.
Form	Liquid
Quality Control Testing	Antibody Reactive Against Recombinant Protein.

Recommend Usage	Western Blot (1:100) The optimal working dilution should be determined by the end user.
Storage Buffer	In antiserum (0.09% sodium azide)
Storage Instruction	Store at 4°C. For long term storage store at -20°C. Aliquot to avoid repeated freezing and thawing.
Note	This product contains sodium azide: a POISONOUS AND HAZARDOUS SUBSTANCE which should be handled by trained staff only.

Applications

- Western Blot (Cell lysate)

Western blot showing Mad1p polyclonal antibody (Cat # PAB12341) (1 : 100) on yeast whole cell lysate.

- Immunofluorescence

Immunofluorescence showing Mad1p polyclonal antibody (Cat # PAB12341) on yeast.

Gene Info — MAD1

Entrez GeneID	852794
Gene Name	MAD1
Gene Alias	-
Gene Description	Coiled-coil protein involved in the spindle-assembly checkpoint; phosphorylated by Mps1p upon c heckpoint activation which leads to inhibition of the activity of the anaphase promoting complex; fo rms a complex with Mad2p
Gene Ontology	Hyperlink
Other Designations	Mad1p