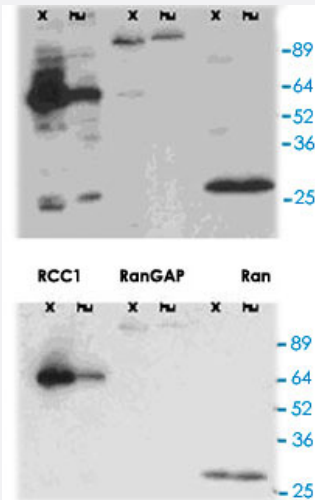


RanGAP polyclonal antibody

Catalog # PAB12338 Size 100 uL

Applications



Western Blot

Western blot of RCC1 polyclonal antibody (Cat # PAB12339), RanGAP polyclonal antibody (Cat # PAB12338) and RAN polyclonal antibody (Cat # PAB12357) on Hela total cell and Xenopus egg extract.

Specification

Product Description Rabbit polyclonal antibody raised against synthetic peptide of RanGAP.

Immunogen A mixture of synthetic peptide corresponding to amino acids and

Sequence CHWSDMFTGRLRPEI, CPSPEKLVRMGPRRSA

Host Rabbit

Reactivity Clawed frog, Frog, Human

Specificity Reacts with human & Xenopus RanGAP.

Form Liquid

Quality Control Testing Antibody Reactive Against Synthetic Peptide.

Recommend Usage Western Blot (1:500-1:1000)
The optimal working dilution should be determined by the end user.

Storage Buffer	In PBS (0.09% sodium azide)
Storage Instruction	Store at 4°C. For long term storage store at -20°C. Aliquot to avoid repeated freezing and thawing.
Note	This product contains sodium azide: a POISONOUS AND HAZARDOUS SUBSTANCE which should be handled by trained staff only.

Applications

- Western Blot

Western blot of RCC1 polyclonal antibody (Cat # PAB12339), RanGAP polyclonal antibody (Cat # PAB12338) and RAN polyclonal antibody (Cat # PAB12357) on Hela total cell and Xenopus egg extract.

- Immunofluorescence