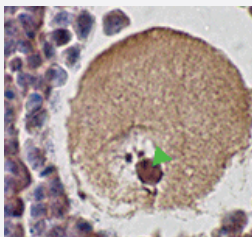


Sycp1 polyclonal antibody

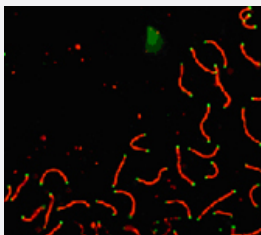
Catalog # PAB12160 Size 100 uL

Applications



Immunohistochemistry

Punctate staining of murine Sycp1 in mouse ovary using Sycp1 polyclonal antibody (Cat # PAB12160).



Immunofluorescence

Immunofluorescent staining of Sycp1 in mouse pachytene preparation (red) using Sycp1 polyclonal antibody (Cat # PAB12160). CDK2 staining, near telomeres, is also present (green).

Specification

Product Description	Rabbit polyclonal antibody raised against synthetic peptide of Sycp1.
Immunogen	A synthetic peptide corresponding to C-terminus of mouse Sycp1.
Host	Rabbit
Reactivity	Mouse, Rat
Specificity	This antibody is specific to mouse SCP1.
Form	Liquid
Recommend Usage	The optimal working dilution should be determined by the end user.

Storage Buffer	In Tris-citrate/phosphate buffer, pH 7.0-8.0 (0.09% sodium azide)
Storage Instruction	Store at 4°C. Do not freeze.
Note	This product contains sodium azide: a POISONOUS AND HAZARDOUS SUBSTANCE which should be handled by trained staff only.

Applications

- Immunohistochemistry (Formalin/PFA-fixed paraffin-embedded sections)

- Immunohistochemistry (Frozen sections)

- Immunohistochemistry

Punctate staining of murine Sycp1 in mouse ovary using Sycp1 polyclonal antibody (Cat # PAB12160).

- Immunofluorescence

Immunofluorescent staining of Sycp1 in mouse pachytene preparation (red) using Sycp1 polyclonal antibody (Cat # PAB12160). CDK2 staining, near telomeres, is also present (green).

Gene Info — Sycp1

Entrez GeneID	20957
Gene Name	Sycp1
Gene Alias	SCP1
Gene Description	synaptonemal complex protein 1
Gene Ontology	Hyperlink
Other Designations	-

Publication Reference

- [Small ubiquitin-related modifier \(SUMO\)-1, SUMO-2/3 and SUMOylation are involved with centromeric heterochromatin of chromosomes 9 and 1 and proteins of the synaptonemal complex during meiosis in men.](#)

Brown PW, Hwang K, Schlegel PN, Morris PL.

Human Reproduction (Oxford, England) 2008 Dec; 23(12):2850.

Application: IP, WB-Ti, Human, Human testis

- [Heritable and stable gene knockdown in rats.](#)

Dann CT, Alvarado AL, Hammer RE, Garbers DL.

PNAS 2006 Jul; 103(30):11246.

Application: IF, IHC, Rat, Rat testis