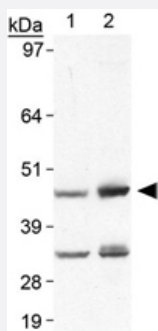


Plin5 polyclonal antibody

Catalog # PAB12159 Size 100 uL

Applications



Western Blot (Tissue lysate)

Western blot analysis of Plin5 in heart lysate using Plin5 polyclonal antibody (Cat # PAB12159). Lane 1 : human heart. Lane 2 : mouse heart.

Specification

Product Description	Rabbit polyclonal antibody raised against synthetic peptide of Plin5.
Immunogen	A synthetic peptide corresponding to amino acids 400-463 of mouse Plin5.
Host	Rabbit
Reactivity	Human, Mouse
Form	Liquid
Recommend Usage	Western Blot (0.5-2 ug/mL) The optimal working dilution should be determined by the end user.
Storage Buffer	In PBS (30% glycerol, 0.09% sodium azide)
Storage Instruction	Store at 4°C for short term. For long term storage store at -20°C. Aliquot to avoid repeated freezing and thawing.
Note	This product contains sodium azide: a POISONOUS AND HAZARDOUS SUBSTANCE which should be handled by trained staff only.

Applications

- Western Blot (Tissue lysate)

Western blot analysis of Plin5 in heart lysate using Plin5 polyclonal antibody (Cat # PAB12159). Lane 1 : human heart. Lane 2 : mouse heart.

Gene Info — 2310076L09Rik

Entrez GeneID [66968](#)

Protein Accession# [Q8BVZ1\(mouse\)](#)

Gene Name 2310076L09Rik

Gene Alias A415325, AW109675, Lsdp5, MLDP, PAT-1

Gene Description RIKEN cDNA 2310076L09 gene

Gene Ontology [Hyperlink](#)

Other Designations lipid droplet associated protein|lipid storage droplet protein 5

Publication Reference

- [OXPAT/PAT-1 is a PPAR-induced lipid droplet protein that promotes fatty acid utilization.](#)

Wolins NE, Quaynor BK, Skinner JR, Tzekov A, Croce MA, Gropler MC, Varma V, Yao-Borengasser A, Rasouli N, Kern PA, Finck BN, Bickel PE.

Diabetes 2006 Dec; 55(12):3418.

Application: IHC-Fr, WB, Mouse, 3T3-L1 cells, Mouse hearts, livers