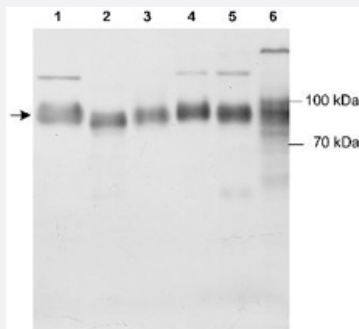


Scarb2 polyclonal antibody

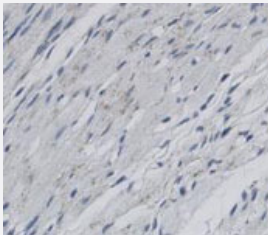
Catalog # PAB12157 Size 100 uL

Applications



Western Blot

Western blot analysis of Scarb2 in various samples using Scarb2 polyclonal antibody (Cat # PAB12157). ECL 40 minute exposure. Lane 1 : Rat cardiac fibroblasts (RCF). Lane 2 : 3T3 mouse fibroblasts. Lane 3 : Long hond canine lung lysate. Lane 4 : RCF treated with angiotensin II. Lane 5 : RCF treated with H2O2. Lane 6 : HEPG2 human liver lysate.



Immunohistochemistry

Staining of Scarb2 in rat infarctzone tissue using Scarb2 polyclonal antibody (Cat # PAB12157) with a DAB detection system.

Specification

Product Description	Rabbit polyclonal antibody raised against synthetic peptide of Scarb2.
Immunogen	A synthetic peptide corresponding to C-terminus of mouse Scarb2.
Host	Rabbit
Reactivity	Dog, Human, Mouse, Rat
Specificity	This antibody is specific to mouse and human LIMPII/gp85.
Form	Liquid
Quality Control Testing	Antibody Reactive Against Synthetic Peptide.

Recommend Usage	Immunocytochemistry (1:250) Immunofluorescence (1:50-1:250) Immunohistochemistry (1:200) Immunoprecipitation (1:100) Western Blot (1:1000) The optimal working dilution should be determined by the end user.
Storage Buffer	In antiserum (0.05% sodium azide)
Storage Instruction	Store at -20°C or -80°C. Aliquot to avoid repeated freezing and thawing.
Note	This product contains sodium azide: a POISONOUS AND HAZARDOUS SUBSTANCE which should be handled by trained staff only.

Applications

- Western Blot

Western blot analysis of Scarb2 in various samples using Scarb2 polyclonal antibody (Cat # PAB12157). ECL 40 minute exposure. Lane 1 : Rat cardiac fibroblasts (RCF). Lane 2 : 3T3 mouse fibroblasts. Lane 3 : Long hond canine lung lysate. Lane 4 : RCF treated with angiotensin II. Lane 5 : RCF treated with H2O2. Lane 6 : HEPG2 human liver lysate.

- Immunohistochemistry

Staining of Scarb2 in rat infarctzone tissue using Scarb2 polyclonal antibody (Cat # PAB12157) with a DAB detection system.

- Immunocytochemistry

- Immunofluorescence

- Immunoprecipitation

Gene Info — Scarb2

Entrez GeneID	12492
Gene Name	Scarb2
Gene Alias	9330185J12Rik, Cd36l2, LGP85, LIMP-2, MLGP85
Gene Description	scavenger receptor class B, member 2
Gene Ontology	Hyperlink
Gene Summary	O

Other Designations

CD36 antigen (collagen type I receptor, thrombospondin receptor)-like 2|LIMP II

Publication Reference

- [A nonsense mutation in the LIMP-2 gene associated with progressive myoclonic epilepsy and nephrotic syndrome.](#)

Balreira A, Gaspar P, Caiola D, Chaves J, Beirao I, Lima JL, Azevedo JE, Miranda MC.

Human Molecular Genetics 2008 Apr; 17(14):2238.