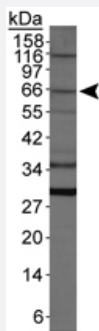


Atg16l1 polyclonal antibody

Catalog # PAB12149 Size 100 uL

Applications



Western Blot (Cell lysate)

Western blot analysis of Atg16l1 in NIH/3T3 whole cell lysates using Atg16l1 polyclonal antibody (Cat # PAB12149).

Specification

Product Description	Rabbit polyclonal antibody raised against synthetic peptide of Atg16l1.
Immunogen	A synthetic peptide corresponding to amino acids 1-100 of mouse Atg16l1.
Host	Rabbit
Reactivity	Human, Mouse
Form	Liquid
Recommend Usage	Western Blot (2 ug/mL) The optimal working dilution should be determined by the end user.
Storage Buffer	In PBS (30% glycerol, 0.09% sodium azide)
Storage Instruction	Store at 4°C for short term. For long term storage store at -20°C. Aliquot to avoid repeated freezing and thawing.
Note	This product contains sodium azide: a POISONOUS AND HAZARDOUS SUBSTANCE which should be handled by trained staff only.

Applications

- Western Blot (Cell lysate)

Western blot analysis of Atg16l1 in NIH/3T3 whole cell lysates using Atg16l1 polyclonal antibody (Cat # PAB12149).

Gene Info — Atg16l1

Entrez GeneID	77040
Protein Accession#	Q8C0J2
Gene Name	Atg16l1
Gene Alias	1500009K01Rik, AI035639, AI225866, Apg16l, Atg16l, WDR30
Gene Description	autophagy-related 16-like 1 (yeast)
Gene Ontology	Hyperlink
Other Designations	APG16 autophagy 16-like APG16L OTTMUSP00000017708 autophagy 16-like