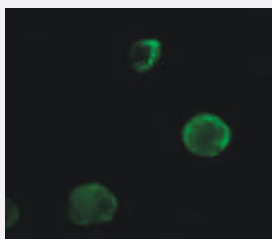


Calr polyclonal antibody

Catalog # PAB12147 Size 100 uL

Applications



Immunofluorescence

Immunofluorescence staining of Calr in HCT15 colon cancer cells using Calr polyclonal antibody (Cat # PAB12147). Secondary antibody was an Alexa Fluor 488. Photo courtesy of Dr. Birkenkamp Demtroeder.

Specification

| | |
|--------------------------------|----------------------------------------------------------------------------------------------------------------------------------------------------------------------------------------|
| Product Description | Rabbit polyclonal antibody raised against recombinant Calr. |
| Immunogen | Recombinant fusion protein corresponding to mouse Calr. |
| Host | Rabbit |
| Reactivity | Bovine, Human, Mouse, Rat |
| Specificity | This antibody is specific to calreticulin. |
| Form | Liquid |
| Quality Control Testing | Antibody Reactive Against Recombinant Protein. |
| Recommend Usage | Immunocytochemistry (1:250) Immunofluorescence (1:50) Immunohistochemistry (1:50) Western Blot (1:1000) The optimal working dilution should be determined by the end user. |
| Storage Buffer | In PBS (0.05% sodium azide) |

Storage Instruction

Store at -20°C or -80°C.
Aliquot to avoid repeated freezing and thawing.

Note

This product contains sodium azide: a POISONOUS AND HAZARDOUS SUBSTANCE which should be handled by trained staff only.

Applications

- Western Blot
- Immunohistochemistry
- Immunocytochemistry
- Immunofluorescence

Immunofluorescence staining of Calr in HCT15 colon cancer cells using Calr polyclonal antibody (Cat # PAB12147). Secondary antibody was an Alexa Fluor 488. Photo courtesy of Dr. Birkenkamp Demtroeder.

- Immunoprecipitation

Gene Info — Calr

Entrez GeneID [12317](#)

Protein Accession# [P14211](#)

Gene Name Calr

Gene Alias CRT, Calregulin

Gene Description calreticulin

Gene Ontology [Hyperlink](#)

Other Designations OTTMUSP00000025211

Publication Reference

- [Identification of human T cell leukemia virus type 1 tax amino acid signals and cellular factors involved in secretion of the viral oncoprotein.](#)

Jain P, Mostoller K, Flaig KE, Ahuja J, Lepoutre V, Alefantis T, Khan ZK, Wigdahl B.

The Journal of Biological Chemistry 2007 Nov; 282(47):34581.

Application: Array, Mouse, BHK-21 cells

- [Impaired megakaryocytopoiesis in type 2B von Willebrand disease with severe thrombocytopenia.](#)

Nurden P, Debili N, Vainchenker W, Bobe R, Bredoux R, Corvazier E, Combrie R, Fressinaud E, Meyer D, Nurden AT, Enouf J.

Blood 2006 Oct; 108(8):2587.

Application: WB-Ce, Human, Human megakaryocytes, platelets

- [ATP-sensitive K⁺-channel subunits on the mitochondria and endoplasmic reticulum of rat cardiomyocytes.](#)

Zhou M, Tanaka O, Sekiguchi M, He HJ, Yasuoka Y, Itoh H, Kawahara K, Abe H.

The Journal of Histochemistry and Cytochemistry 2005 Dec; 53(12):1491.

Application: IF, WB-Ti, Rat, Heart

- [A splice variant of the TCR zeta mRNA lacking exon 7 leads to the down-regulation of TCR zeta, the TCR/CD3 complex, and IL-2 production in systemic lupus erythematosus T cells.](#)

Tsuzaka K, Setoyama Y, Yoshimoto K, Shiraishi K, Suzuki K, Abe T, Takeuchi T.

The Journal of Immunology 2005 Mar; 174(6):3518.

Application: IF, Human, MA5.8 cells

- [Human FK506 binding protein 65 is associated with colorectal cancer.](#)

Olesen SH, Christensen LL, Sørensen FB, Cabezón T, Laurberg S, Orntoft TF, Birkenkamp-Demtröder K.

Molecular & Cellular Proteomics 2005 Apr; 4(4):534.

Application: IF, Monkey, COS-7 cells