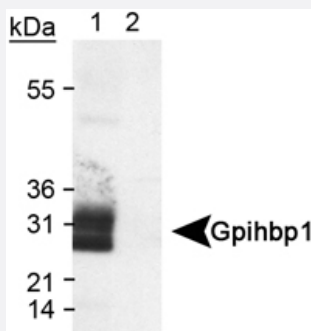


Gpihbp1 polyclonal antibody

Catalog # PAB12140 Size 100 uL

Applications



Western Blot (Transfected lysate)

Western blot analysis of Gpihbp1 in transfected lysate (Lane 1) using Gpihbp1 polyclonal antibody (Cat # PAB12140). An empty vector lysate was used as a negative control (Lane 2).

Specification

Product Description	Rabbit polyclonal antibody raised against synthetic peptide of Gpihbp1.
Immunogen	A synthetic peptide corresponding to amino acids 170-250 of mouse Gpihbp1.
Host	Rabbit
Reactivity	Mouse
Form	Liquid
Quality Control Testing	Antibody Reactive Against Synthetic Peptide.
Recommend Usage	Western Blot (2 ug/ mL) The optimal working dilution should be determined by the end user.
Storage Buffer	In Tris-glycine, 150 mM NaCl (0.05% sodium azide)
Storage Instruction	Store at -20°C or -80°C. Aliquot to avoid repeated freezing and thawing.
Note	This product contains sodium azide: a POISONOUS AND HAZARDOUS SUBSTANCE which should be handled by trained staff only.

Applications

- Western Blot (Transfected lysate)

Western blot analysis of Gpihbp1 in transfected lysate (Lane 1) using Gpihbp1 polyclonal antibody (Cat # PAB12140). An empty vector lysate was used as a negative control (Lane 2).

Gene Info — Gpihbp1

Entrez GeneID	68453
Protein Accession#	Q9D1N2
Gene Name	Gpihbp1
Gene Alias	1110002J19Rik, GPI-HBP1
Gene Description	GPI-anchored HDL-binding protein 1
Gene Ontology	Hyperlink
Other Designations	-

Publication Reference

- [Glycosylation of Asn-76 in mouse GPIHBP1 is critical for its appearance on the cell surface and the binding of chylomicrons and lipoprotein lipase.](#)

Beigneux AP, Gin P, Davies BS, Weinstein MM, Bensadoun A, Ryan RO, Fong LG, Young SG.

Journal of Lipid Research 2008 Jun; 49(6):1312.

Application: IF, Human, Mouse, CHO, HeLa cells