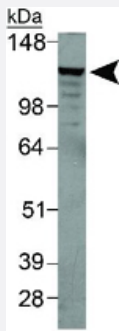


# Ireb2 polyclonal antibody

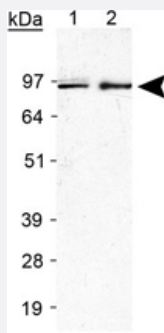
Catalog # PAB12137      Size 100 uL

## Applications



### Western Blot (Tissue lysate)

Western blot analysis of Ireb2 in mouse liver lysate using Ireb2 polyclonal antibody (Cat # PAB12137).



### Western Blot (Cell lysate)

Western blot analysis of Ireb2 in Raw 264.7 lysate using Ireb2 polyclonal antibody (Cat # PAB12137). Lane 1 : Lot B. Lane 2 : Lot C.

## Specification

<b>Product Description</b>	Rabbit polyclonal antibody raised against synthetic peptide of Ireb2.
<b>Immunogen</b>	A synthetic peptide corresponding to amino acids 100-200 of mouse Ireb2.
<b>Host</b>	Rabbit
<b>Reactivity</b>	Human, Mouse, Primates, Rat
<b>Form</b>	Liquid
<b>Quality Control Testing</b>	Antibody Reactive Against Synthetic Peptide.
<b>Recommend Usage</b>	The optimal working dilution should be determined by the end user.

Storage Buffer	In Tris-glycine, 150 mM NaCl (0.05% sodium azide)
Storage Instruction	Store at 4°C for short term. For long term storage store at -20°C. Aliquot to avoid repeated freezing and thawing.
Note	This product contains sodium azide: a POISONOUS AND HAZARDOUS SUBSTANCE which should be handled by trained staff only.

## Applications

- Western Blot (Tissue lysate)

Western blot analysis of Ireb2 in mouse liver lysate using Ireb2 polyclonal antibody (Cat # PAB12137).

- Western Blot (Cell lysate)

Western blot analysis of Ireb2 in Raw 264.7 lysate using Ireb2 polyclonal antibody (Cat # PAB12137). Lane 1 : Lot B. Lane 2 : Lot C.

## Gene Info — Ireb2

Entrez GeneID	<a href="#">64602</a>
---------------	-----------------------

Protein Accession#	<a href="#">Q811J3</a>
--------------------	------------------------

Gene Name	Ireb2
-----------	-------

Gene Alias	D9Ert85e, DKFZp564D1164, Irp2
------------	-------------------------------

Gene Description	iron responsive element binding protein 2
------------------	---

Gene Ontology	<a href="#">Hyperlink</a>
---------------	---------------------------

Other Designations	-
--------------------	---