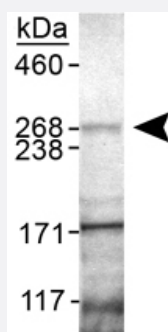


Lrrk2 polyclonal antibody

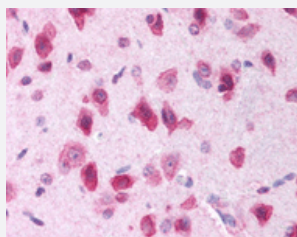
Catalog # PAB12132 Size 100 uL

Applications



Western Blot (Tissue lysate)

Western blot analysis of murine Lrrk2 in mouse brain lysate using Lrrk2 polyclonal antibody (Cat # PAB12132).



Immunohistochemistry (Formalin/PFA-fixed paraffin-embedded sections)

Staining of Lrrk2 neurons and glia in mouse brain using Lrrk2 polyclonal antibody (Cat # PAB12132) at 2.5 ug/mL .

Specification

Product Description	Rabbit polyclonal antibody raised against synthetic peptide of Lrrk2.
Immunogen	A synthetic peptide corresponding to amino acids 900-1000 of mouse Lrrk2.
Host	Rabbit
Reactivity	Mouse
Form	Liquid
Recommend Usage	Western Blot (2 ug/mL) Immunohistochemistry (Formalin/PFA-fixed paraffin-embedded sections) (2.5 ug/mL) The optimal working dilution should be determined by the end user.

Storage Buffer	In Tris-citrate/phosphate buffer, pH 7.0-8.0 (0.09% sodium azide)
Storage Instruction	Store at 4°C. Do not freeze.
Note	This product contains sodium azide: a POISONOUS AND HAZARDOUS SUBSTANCE which should be handled by trained staff only.

Applications

- Western Blot (Tissue lysate)

Western blot analysis of murine Lrrk2 in mouse brain lysate using Lrrk2 polyclonal antibody (Cat # PAB12132).

- Immunohistochemistry (Formalin/PFA-fixed paraffin-embedded sections)

Staining of Lrrk2 neurons and glia in mouse brain using Lrrk2 polyclonal antibody (Cat # PAB12132) at 2.5 ug/mL .

Gene Info — Lrrk2

Entrez GeneID	66725
Protein Accession#	Q5S006
Gene Name	Lrrk2
Gene Alias	4921513O20Rik, 9330188B09Rik, AW561911, D630001M17Rik, Gm927, cl-46
Gene Description	leucine-rich repeat kinase 2
Gene Ontology	Hyperlink
Other Designations	OTTMUSP00000022827