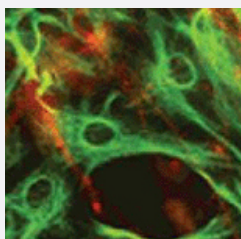


# GFAP polyclonal antibody

Catalog # PAB12119

Size 50 uL

## Applications



### Immunofluorescence

Immunofluorescence detection of neurons and glia of rat forebrain using GFAP polyclonal antibody (Cat # PAB12119).

## Specification

Product Description	Rabbit polyclonal antibody raised against native GFAP.
Immunogen	Native purified GFAP from pig spinal cord.
Host	Rabbit
Reactivity	Bovine, Cat, Human, Mouse, Pig, Rat
Specificity	Specifically recognizes mammalian GFAP on western blots and immunocytochemically.
Form	Liquid
Quality Control Testing	Antibody Reactive Against Native Purified Protein.
Recommend Usage	Immunofluorescence (1:1000) Immunohistochemistry (1:1000) Immunohistochemistry (Frozen sections) (1:1000) Immunohistochemistry (Formalin/PFA-fixed paraffin-embedded sections) (1:1000) Western Blot (1:50000) The optimal working dilution should be determined by the end user.
Storage Buffer	In antiserum

**Storage Instruction**

Store at 4°C for short term. For long term storage store at -20°C.  
Aliquot to avoid repeated freezing and thawing.

## Applications

- Western Blot
- Immunohistochemistry (Formalin/PFA-fixed paraffin-embedded sections)
- Immunohistochemistry (Frozen sections)
- Immunocytochemistry
- Immunofluorescence

Immunofluorescence detection of neurons and glia of rat forebrain using GFAP polyclonal antibody (Cat # PAB12119).

## Gene Info — GFAP

Entrez GeneID	<a href="#">396562</a>
---------------	------------------------

Gene Name	GFAP
-----------	------

Gene Alias	-
------------	---

Gene Description	glial fibrillary acidic protein
------------------	---------------------------------

Gene Ontology	<a href="#">Hyperlink</a>
---------------	---------------------------

Other Designations	-
--------------------	---

## Publication Reference

- [Proteomic Characterization of Synaptosomes from Human Substantia Nigra Indicates Altered Mitochondrial Translation in Parkinson's Disease.](#)

Sarah Plum, Britta Eggers, Stefan Helling, Markus Stepath, Carsten Theiss, Renata E P Leite, Mariana Molina, Lea T Grinberg, Peter Riederer, Manfred Gerlach, Caroline May, Katrin Marcus.

Cells 2020 Dec; 9(12):2580.

Application: WB-Ti, Human, Human substantia nigra pars compacta

- [Ablation of neurons expressing agouti-related protein activates fos and gliosis in postsynaptic target regions.](#)

Wu Q, Howell MP, Palmiter RD.

Journal of Neuroscience 2008 Sep; 28(37):9218.

Application: IF, IHC, Mouse , Mouse astrocytes, brain

- [Neurotoxicity from innate immune response is greatest with targeted replacement of E4 allele of apolipoprotein E gene and is mediated by microglial p38MAPK.](#)

Maezawa I, Nivison M, Montine KS, Maeda N, Montine TJ.

FASEB Journal 2006 Apr; 20(6):797.

Application: IF, Mouse, Mouse cerebral cortical astrocytes

- [Preimplantation human embryos and embryonic stem cells show comparable expression of stage-specific embryonic antigens.](#)

Henderson JK, Draper JS, Baillie HS, Fishel S, Thomson JA, Moore H, Andrews PW.

Stem Cells 2002 Jan; 20(4):329.

Application: Flow Cyt, Human, Human embryonic stem cell lines, H7 and H14

- [Localization of the glial fibrillary acidic protein in astrocytes by immunofluorescence.](#)

Bignami A, Eng LF, Dahl D, Uyeda CT.

Brain Research 1972 Aug; 43(2):429.

Application: ID, Dog, Rabbit, Mouse, Rat, Nervou, Brain