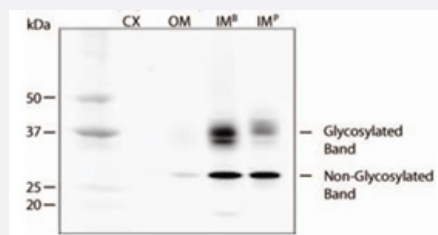


Aqp2 polyclonal antibody

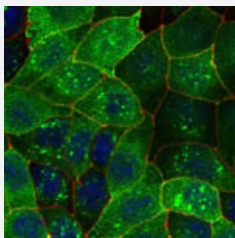
Catalog # PAB12114 Size 100 uL

Applications



Western Blot (Tissue lysate)

Western blot analysis of Aqp2 in rat kidney extracts using Aqp2 polyclonal antibody (Cat # PAB12114). Key : CX=Cortex, OM=Outer Medulla, IMB =Inner Medulla Base, IMP = Inner Medulla Papilla.



Immunocytochemistry

Staining of Aqp2 on mpkCCD cell line using Aqp2 polyclonal antibody (Cat # PAB12114).

Specification

Product Description	Rabbit polyclonal antibody raised against synthetic peptide of Aqp2.
Immunogen	A synthetic peptide corresponding to residues within amino acids 200-300 at C-terminus of rat Aqp2.
Host	Rabbit
Reactivity	Human, Mouse, Rat
Form	Liquid
Purification	Immunogen affinity purification

Recommend Usage	Immunocytochemistry/Immunofluorescence (1 ug/mL) Immunohistochemistry (1:100-1:200) Immunohistochemistry (Formalin/PFA-fixed paraffin-embedded sections) (1:100-1:200) Western Blot (1-2 ug/mL) The optimal working dilution should be determined by the end user.
Storage Buffer	In PBS (0.05% sodium azide).
Storage Instruction	Store at 4°C for short term. For long term storage store at -20°C. Aliquot to avoid repeated freezing and thawing.
Note	This product contains sodium azide: a POISONOUS AND HAZARDOUS SUBSTANCE which should be handled by trained staff only. This antibody is useful for western blot, where bands can be seen ~28 kDa for the non-glycosylated form and ~37 kDa for the glycosylated form.

Applications

- Western Blot (Tissue lysate)

Western blot analysis of Aqp2 in rat kidney extracts using Aqp2 polyclonal antibody (Cat # PAB12114). Key : CX=Cortex, OM=Outer Medulla, IMB =Inner Medulla Base, IMP = Inner Medulla Papilla.

- Immunohistochemistry (Formalin/PFA-fixed paraffin-embedded sections)

- Immunocytochemistry

Staining of Aqp2 on mpkCCD cell line using Aqp2 polyclonal antibody (Cat # PAB12114).

Gene Info — Aqp2

Entrez GeneID	25386
Protein Accession#	P34080
Gene Name	Aqp2
Gene Alias	AQP-2, MGC156502, aquaporin-2
Gene Description	aquaporin 2 (collecting duct)
Gene Ontology	Hyperlink
Other Designations	-