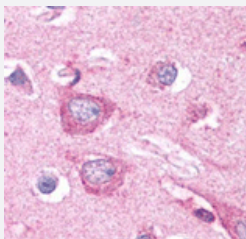


Disc1 polyclonal antibody

Catalog # PAB12110 Size 100 uL

Applications



Immunohistochemistry

Staining of Disc1 on human brain neurons and neuropil using Disc1 polyclonal antibody (Cat # PAB12110) at 2.5 ug/mL .

Specification

Product Description	Rabbit polyclonal antibody raised against synthetic peptide of Disc1.
Immunogen	A synthetic peptide corresponding to amino acids 400-500 of rat Disc1.
Host	Rabbit
Reactivity	Human, Mouse, Rat
Form	Liquid
Quality Control Testing	Antibody Reactive Against Synthetic Peptide.
Recommend Usage	The optimal working dilution should be determined by the end user.
Storage Buffer	In Tris-glycine, 150 mM NaCl (0.05% sodium azide)
Storage Instruction	Store at -20°C or -80°C. Aliquot to avoid repeated freezing and thawing.
Note	This product contains sodium azide: a POISONOUS AND HAZARDOUS SUBSTANCE which should be handled by trained staff only.

Applications

- Western Blot
- Immunohistochemistry (Formalin/PFA-fixed paraffin-embedded sections)
- Immunohistochemistry

Staining of Disc1 on human brain neurons and neuropil using Disc1 polyclonal antibody (Cat # PAB12110) at 2.5 ug/mL .

Gene Info — Disc1

Entrez GeneID [307940](#)

Protein Accession# [Q810H6](#)

Gene Name Disc1

Gene Alias -

Gene Description disrupted in schizophrenia 1

Gene Ontology [Hyperlink](#)

Other Designations -

Publication Reference

- [Disrupted in schizophrenia 1 \(DISC1\): association with schizophrenia, schizoaffective disorder, and bipolar disorder.](#)

Hodgkinson CA, Goldman D, Jaeger J, Persaud S, Kane JM, Lipsky RH, Malhotra AK.

American Journal of Human Genetics 2004 Nov; 75(5):862.

Application: Dot, IF, WB, Human, Mouse, Mouse cortical neuronal cultures, SH-SY5Y

- [Disrupted-in-Schizophrenia-1 \(DISC-1\): mutant truncation prevents binding to NudE-like \(NUDEL\) and inhibits neurite outgrowth.](#)

Ozeki Y, Tomoda T, Kleiderlein J, Kamiya A, Bord L, Fujii K, Okawa M, Yamada N, Hatten ME, Snyder SH, Ross CA, Sawa A.

PNAS 2003 Jan; 100(1):289.

Application: IF, WB-Ti, Human, Rat, Brain, Heart, Liver, Kidney, Thymus, PC12, HeLa cells