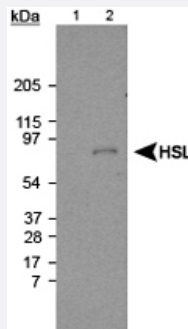


Lipe polyclonal antibody

Catalog # PAB12105 Size 50 uL

Applications



Western Blot (Tissue lysate)

Western blot analysis of Lipe using Lipe polyclonal antibody (Cat # PAB12105).
Lane 1 : Liver extract (negative control). Lane 2 : Fat extract (10 ug) (positive sample).

Specification

Product Description	Rabbit polyclonal antibody raised against partial recombinant Lipe.
Immunogen	Recombinant protein corresponding to amino acids 699-908 of rat Lipe.
Host	Rabbit
Reactivity	Human, Rat
Specificity	This antibody is specific to hormone-sensitive lipase protein.
Form	Liquid
Quality Control Testing	Antibody Reactive Against Recombinant Protein.
Recommend Usage	The optimal working dilution should be determined by the end user.
Storage Buffer	In PBS (1 mg/mL BSA, 0.05% sodium azide)
Storage Instruction	Store at -20°C or -80°C. Aliquot to avoid repeated freezing and thawing.
Note	This product contains sodium azide: a POISONOUS AND HAZARDOUS SUBSTANCE which should be handled by trained staff only.

Applications

- Western Blot (Tissue lysate)

Western blot analysis of Lipe using Lipe polyclonal antibody (Cat # PAB12105). Lane 1 : Liver extract (negative control). Lane 2 : Fat extract (10 ug) (positive sample).

Gene Info — Lipe

Entrez GeneID	25330
Protein Accession#	P15304
Gene Name	Lipe
Gene Alias	HSL
Gene Description	lipase, hormone sensitive
Gene Ontology	Hyperlink
Gene Summary	O
Other Designations	Hormone - sensitive lipase testicular isoform Hormone - sensitive lipase, testicular isoform

Publication Reference

- [Detection of hormone-sensitive lipase in various tissues. I. Expression of an HSL/bacterial fusion protein and generation of anti-HSL antibodies.](#)

Kraemer FB, Patel S, Saedi MS, Sztalryd C.

Journal of Lipid Research 1993 Apr; 34(4):663.

Application: Func, IP, WB-R, WB-Ti, Human, Rat, Adipose tissues, Hearts, Kidneies, Lungs, Ovaries, Testes