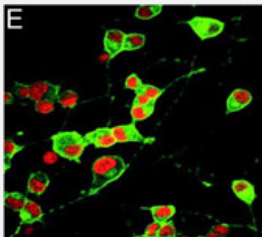


Gap43 polyclonal antibody

Catalog # PAB12102 Size 100 uL

Applications



Immunofluorescence

Immunofluorescence of GAP43 (green) demonstrates intense staining in overexpressing wild-type PS-1 (E) PC-12 cells using Gap43 polyclonal antibody (Cat # PAB12102). (Teo, et al, 2005) .

Specification

Product Description	Rabbit polyclonal antibody raised against synthetic peptide of Gap43.
Immunogen	A synthetic peptide (conjugated with KLH) corresponding to amino acids 216-226 of mouse/rat Gap 43.
Sequence	KEDPEADQEHA
Host	Rabbit
Reactivity	Chicken, Human, Mouse, Rat
Specificity	This antibody is specific to GAP-43.
Form	Liquid
Quality Control Testing	Antibody Reactive Against Synthetic Peptide.
Recommend Usage	Western Blot (0.1-1 ug/mL) Immunohistochemistry (Formalin/PFA-fixed paraffin-embedded sections) (1-2 ug/mL) Immunohistochemistry (Frozen sections) (1-2 ug/mL) Immunofluorescence (1-2 ug/mL) The optimal working dilution should be determined by the end user.

Storage Buffer	In PBS (0.05% sodium azide)
Storage Instruction	Store at -20°C or -80°C. Aliquot to avoid repeated freezing and thawing.
Note	This product contains sodium azide: a POISONOUS AND HAZARDOUS SUBSTANCE which should be handled by trained staff only.

Applications

- Western Blot
- Immunohistochemistry (Formalin/PFA-fixed paraffin-embedded sections)
- Immunohistochemistry (Frozen sections)
- Immunofluorescence

Immunofluorescence of GAP43 (green) demonstrates intense staining in overexpressing wild-type PS-1 (E) PC-12 cells using Gap43 polyclonal antibody (Cat # PAB12102). (Teo, et al, 2005) .

Gene Info — Gap43

Entrez GeneID	14432
Protein Accession#	P07936
Gene Name	Gap43
Gene Alias	B-50, Basp2, GAP-43
Gene Description	growth associated protein 43
Gene Ontology	Hyperlink
Gene Summary	membrane attached signal protein 2 growth accentuating protein 43 neuromodulin
Other Designations	OTTMUSP00000017444 brain abundant, membrane attached signal protein 2 growth accentuating protein 43 neuromodulin

Gene Info — Gap43

Entrez GeneID	29423
---------------	-----------------------

Protein Accession#	P07936
Gene Name	Gap43
Gene Alias	Basp2, MGC156666
Gene Description	growth associated protein 43
Gene Ontology	Hyperlink
Gene Summary	membrane attached signal protein 2 growth accentuating protein 43
Other Designations	brain abundant, membrane attached signal protein 2 growth accentuating protein 43

Publication Reference

- [Interaction of amyloid precursor protein with contactins and NgCAM in the retinotectal system.](#)

Osterfield M, Egelund R, Young LM, Flanagan JG.

Development 2008 Mar; 135(6):1189.

Application: IF, IHC, Chicken, Sagittal sections of E11.5 chick heads

- [Metalloproteinase-dependent predegeneration in vitro enhances axonal regeneration within acellular peripheral nerve grafts.](#)

Krekoski CA, Neubauer D, Graham JB, Muir D.

The Journal of Neuroscience 2002 Dec; 22(23):10408.

Application: IF, Rat, Nerve explant culture

- [Regeneration of axons after nerve transection repair is enhanced by degradation of chondroitin sulfate proteoglycan.](#)

Zuo J, Neubauer D, Graham J, Krekoski CA, Ferguson TA, Muir D.

Experimental Neurology 2002 Jul; 176(1):221.

Application: ICC, Rat, Sciatic nerve

- [Axonal regeneration into acellular nerve grafts is enhanced by degradation of chondroitin sulfate proteoglycan.](#)

Krekoski CA, Neubauer D, Zuo J, Muir D.

Journal of Neuroscience 2001 Aug; 21(16):6206.

Application: ICC, IF, IHC-Fr, Rat, Rat sciatic nerves

- [MMP-2 and MMP-9 increase the neurite-promoting potential of schwann cell basal laminae and are upregulated in degenerated nerve.](#)

Ferguson TA, Muir D.

Molecular and Cellular Neurosciences 2000 Aug; 16(2):157.