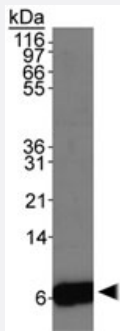


# S100A6 polyclonal antibody

Catalog # PAB12046      Size 100 uL

## Applications



### Western Blot (Cell lysate)

Western blot analysis of S100A6 in HeLa whole cell extracts with S100A6 polyclonal antibody (Cat # PAB12046).

## Specification

<b>Product Description</b>	Rabbit polyclonal antibody raised against full length recombinant S100A6.
<b>Immunogen</b>	Recombinant protein corresponding to full length human S100A6.
<b>Host</b>	Rabbit
<b>Reactivity</b>	Human, Mouse, Rat
<b>Form</b>	Liquid
<b>Recommend Usage</b>	Western Blot (1:1000) The optimal working dilution should be determined by the end user.
<b>Storage Buffer</b>	In antiserum (0.09% sodium azide)
<b>Storage Instruction</b>	Store at 4°C for short term. For long term storage store at -20°C. Aliquot to avoid repeated freezing and thawing.
<b>Note</b>	This product contains sodium azide: a POISONOUS AND HAZARDOUS SUBSTANCE which should be handled by trained staff only.

## Applications

- Western Blot (Cell lysate)

Western blot analysis of S100A6 in HeLa whole cell extracts with S100A6 polyclonal antibody (Cat # PAB12046).

## Gene Info — S100A6

Entrez GeneID	<a href="#">6277</a>
Protein Accession#	<a href="#">P06703</a>
Gene Name	S100A6
Gene Alias	2A9, 5B10, CABP, CACY, PRA
Gene Description	S100 calcium binding protein A6
Omim ID	<a href="#">114110</a>
Gene Ontology	<a href="#">Hyperlink</a>
Gene Summary	The protein encoded by this gene is a member of the S100 family of proteins containing 2 EF-hand calcium-binding motifs. S100 proteins are localized in the cytoplasm and/or nucleus of a wide range of cells, and involved in the regulation of a number of cellular processes such as cell cycle progression and differentiation. S100 genes include at least 13 members which are located as a cluster on chromosome 1q21. This protein may function in stimulation of Ca <sup>2+</sup> -dependent insulin release, stimulation of prolactin secretion, and exocytosis. Chromosomal rearrangements and altered expression of this gene have been implicated in melanoma. [provided by RefSeq]
Other Designations	OTTHUMP00000015472 OTTHUMP00000015473 S100 calcium-binding protein A6 S100 calcium-binding protein A6 (calcyclin) calcyclin prolactin receptor-associated protein

## Publication Reference

- [Expression of S100A6 in cardiac myocytes limits apoptosis induced by tumor necrosis factor-alpha.](#)

Tsoporis JN, Izhar S, Parker TG.

The Journal of Biological Chemistry 2008 Oct; 283(44):30174.

Application: WB, Rat, Rat aortic smooth muscle cells, fibroblasts, neonatal cultured myocytes

## Disease

- [Alzheimer disease](#)
- [Cardiovascular Diseases](#)
- [Dermatitis](#)
- [Diabetes Complications](#)
- [Genetic Predisposition to Disease](#)
- [Metabolic Syndrome X](#)
- [Neoplasms](#)
- [Osteoporosis](#)