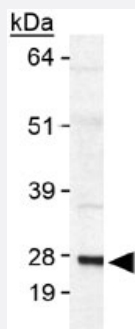


SAT1 polyclonal antibody

Catalog # PAB12044 Size 100 uL

Applications



Western Blot (Transfected lysate)

Western blot analysis of SAT1 in human SAT1 transfected lysate using with SAT1 polyclonal antibody (Cat # PAB12044).

Specification

Product Description	Rabbit polyclonal antibody raised against synthetic peptide of SAT1.
Immunogen	A synthetic peptide corresponding to amino acids 100-171 of human SAT1.
Host	Rabbit
Reactivity	Bovine, Chicken, Goat, Human, Mouse, Pig, Rat, Xenopus
Form	Liquid
Quality Control Testing	Antibody Reactive Against Synthetic Peptide.
Recommend Usage	Western Blot (2 ug/mL) The optimal working dilution should be determined by the end user.
Storage Buffer	In Tris-glycine, 150 mM NaCl (0.05% sodium azide)
Storage Instruction	Store at 4°C for short term. For long term storage store at -20°C. Aliquot to avoid repeated freezing and thawing.
Note	This product contains sodium azide: a POISONOUS AND HAZARDOUS SUBSTANCE which should be handled by trained staff only.

Applications

- Western Blot (Transfected lysate)

Western blot analysis of SAT1 in human SAT1 transfected lysate using with SAT1 polyclonal antibody (Cat # PAB12044).

Gene Info — SAT1

Entrez GeneID	6303
Protein Accession#	P21673
Gene Name	SAT1
Gene Alias	DC21, KFSD, SAT, SSAT, SSAT-1
Gene Description	spermidine/spermine N1-acetyltransferase 1
Omim ID	308800 313020
Gene Ontology	Hyperlink
Gene Summary	The protein encoded by this gene belongs to the acetyltransferase family, and is a rate-limiting enzyme in the catabolic pathway of polyamine metabolism. It catalyzes the acetylation of spermidine and spermine, and is involved in the regulation of the intracellular concentration of polyamines and their transport out of cells. Defects in this gene are associated with keratosis follicularis spinulosa decalvans (KFSD). Alternatively spliced transcripts have been found for this gene
Other Designations	OTTHUMP00000023061 diamine acetyltransferase 1[spermidine/spermine N1-acetyltransferase] spermidine/spermine N1-acetyltransferase alpha

Publication Reference

- [Adenovirus-mediated expression of SSAT inhibits colorectal cancer cell growth in vitro 1.](#)

Sun H, Liu B, Yang YP, Xu CX, Yan YF, Wang W, Liu XX.

Acta Pharmacologica Sinica 2008 May; 29(5):606.

Application: WB, Human, HT-29, LoVo cells

Pathway

- [Arginine and proline metabolism](#)

- [Metabolic pathways](#)

Disease

- [Depressive Disorder](#)
- [Genetic Predisposition to Disease](#)
- [Ovarian Neoplasms](#)
- [Psychiatric Status Rating Scales](#)
- [Psychotic Disorders](#)
- [Schizophrenia](#)