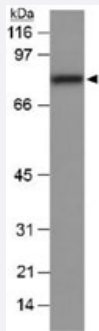


# Scarb1 polyclonal antibody

Catalog # PAB12042      Size 100 uL

## Applications



### Western Blot (Tissue lysate)

Western blot analysis of Scarb1 in mouse liver lysate (20 ug) with Scarb1 polyclonal antibody (Cat # PAB12042).

## Specification

<b>Product Description</b>	Rabbit polyclonal antibody raised against synthetic peptide of Scarb1.
<b>Immunogen</b>	A synthetic peptide corresponding to residues within amino acids 450-509 of at the C-terminus of mouse Scarb1.
<b>Host</b>	Rabbit
<b>Theoretical MW (kDa)</b>	82
<b>Reactivity</b>	Mouse
<b>Specificity</b>	This antibody is specific to SR-BI.
<b>Form</b>	Liquid
<b>Purification</b>	Immunogen affinity purification

<b>Recommend Usage</b>	Flow Cytometry (1:400) Immunocytochemistry (1:50-1:1000) Immunofluorescence (1:50-1:1000) Immunohistochemistry (2.5-5 ug/mL) Immunoprecipitation (1:10-1:500) Western Blot (1:1000-1:5000) The optimal working dilution should be determined by the end user.
<b>Storage Buffer</b>	In PBS (0.02% sodium azide).
<b>Storage Instruction</b>	Store at 4°C. Do not freeze.
<b>Note</b>	This product contains sodium azide: a POISONOUS AND HAZARDOUS SUBSTANCE which should be handled by trained staff only.

## Applications

- Western Blot (Tissue lysate)

Western blot analysis of Scarb1 in mouse liver lysate (20 ug) with Scarb1 polyclonal antibody (Cat # PAB12042).

- Immunohistochemistry

- Immunocytochemistry

- Immunofluorescence

- Immunoprecipitation

- Flow Cytometry

## Gene Info — Scarb1

<b>Entrez GeneID</b>	<a href="#">20778</a>
<b>Protein Accession#</b>	<a href="#">Q61009</a>
<b>Gene Name</b>	Scarb1
<b>Gene Alias</b>	AI120173, CD36, Cd36l1, Cla-1, Cla1, D5Ert460e, SR-B1, SR-BI, SRBI, Srb1, mSR-BI
<b>Gene Description</b>	scavenger receptor class B, member 1
<b>Gene Ontology</b>	<a href="#">Hyperlink</a>

## Gene Summary

O

## Other Designations

OTTMUSP00000026063|scavenger receptor class B type I|scavenger receptor class B1

## Publication Reference

- [Reduced absorption of saturated fatty acids and resistance to diet-induced obesity and diabetes by ezetimibe-treated and Npc1l1-/- mice.](#)

Labonte ED, Camarota LM, Rojas JC, Jandacek RJ, Gilham DE, Davies JP, Ioannou YA, Tso P, Hui DY, Howles PN.

American Journal of Physiology. Gastrointestinal and Liver Physiology 2008 Oct; 295(4):G776.

Application: WB-Ti, Mouse, Mucosal scrapings from intestines of overnightfasted mice

- [Scavenger receptor class B type I localizes to a late endosomal compartment.](#)

Ahras M, Naing T, McPherson R.

Journal of Lipid Research 2008 Jul; 49(7):1569.

Application: IF, Human, HeLa cells

- [Regulation of SR-BI-mediated selective lipid uptake in Chinese hamster ovary-derived cells by protein kinase signaling pathways.](#)

Zhang Y, Ahmed AM, McFarlane N, Capone C, Boreham DR, Truant R, Igdoura SA, Trigatti BL.

Journal of Lipid Research 2007 Feb; 48(2):405.

Application: WB, Mouse, CHO cells