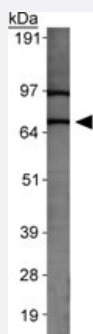


# SLC31A2 polyclonal antibody

Catalog # PAB12028

Size 100 uL

## Applications



### Western Blot (Cell lysate)

Western blot analysis of SLC31A2 in MEF cell lysate with SLC31A2 polyclonal antibody (Cat # PAB12028).

## Specification

<b>Product Description</b>	Rabbit polyclonal antibody raised against synthetic peptide of SLC31A2.
<b>Immunogen</b>	A synthetic peptide corresponding to amino acids 50-100 of human SLC31A2.
<b>Host</b>	Rabbit
<b>Reactivity</b>	Human, Mouse
<b>Form</b>	Liquid
<b>Recommend Usage</b>	Western Blot (1 ug/mL) The optimal working dilution should be determined by the end user.
<b>Storage Buffer</b>	In PBS (30% glycerol, 0.09% sodium azide)
<b>Storage Instruction</b>	Store at 4°C for short term. For long term storage store at -20°C. Aliquot to avoid repeated freezing and thawing.
<b>Note</b>	This product contains sodium azide: a POISONOUS AND HAZARDOUS SUBSTANCE which should be handled by trained staff only.

## Applications

- Western Blot (Cell lysate)

Western blot analysis of SLC31A2 in MEF cell lysate with SLC31A2 polyclonal antibody (Cat # PAB12028).

## Gene Info — SLC31A2

**Entrez GeneID** [1318](#)

**Protein Accession#** [O15432](#)

**Gene Name** SLC31A2

**Gene Alias** COPT2, CTR2, hCTR2

**Gene Description** solute carrier family 31 (copper transporters), member 2

**Omim ID** [603088](#)

**Gene Ontology** [Hyperlink](#)

**Gene Summary** O

**Other Designations** copper transporter 2

## Publication Reference

- [Ctr2 is partially localized to the plasma membrane and stimulates copper uptake in COS-7 cells.](#)

Bertinato J, Swist E, Plouffe LJ, Brooks SP, L'abbe MR.

The Biochemical Journal 2008 Feb; 409(3):731.

Application: WB-Ti, WB-Tr, Monkey, COS-7 cells, Rat tissues

- [hCTR1: a human gene for copper uptake identified by complementation in yeast.](#)

Zhou B, Gitschier J.

PNAS 1997 Jul; 94(14):7481.