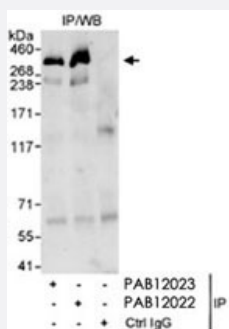


# SPTBN2 polyclonal antibody

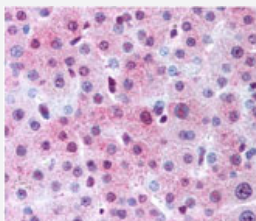
Catalog # PAB12023      Size 100 ug

## Applications



### Western Blot

Western blot analysis of SPTBN2 in HeLa whole cell lysate (1 mg for IP, 20% of IP loaded) with SPTBN2 polyclonal antibody (Cat # PAB12023). Antibodies : Affinity purified SPTBN2 polyclonal antibody (Cat # PAB12023) used for IP at 3 ug/mg lysate. SPTBN2 was also immunoprecipitated by SPTBN2 polyclonal antibody (Cat # PAB12022), which recognizes a downstream epitope. Detection : Chemiluminescence with an exposure time of 30 seconds.



### Immunohistochemistry (Formalin/PFA-fixed paraffin-embedded sections)

Immunohistochemical staining of SPTBN2 in human hepatocytes with SPTBN2 polyclonal antibody (Cat # PAB12023).

## Specification

<b>Product Description</b>	Rabbit polyclonal antibody raised against partial recombinant SPTBN2.
<b>Immunogen</b>	Recombinant protein corresponding to human SPTBN2.
<b>Host</b>	Rabbit
<b>Reactivity</b>	Human
<b>Specificity</b>	The epitope recognized by this antibody maps to a region between residues 2150 and 2200 of human spectrin, beta, non-erythrocytic 2 (spinocerebellar ataxia 5 ) using the numbering given in entry NP_008877.1
<b>Form</b>	Liquid

Quality Control Testing	Antibody Reactive Against Recombinant Protein.
Recommend Usage	Immunoprecipitation (2-5 ug/mg lysate) The optimal working dilution should be determined by the end user.
Storage Buffer	In Tris-citrate/phosphate buffer, pH 7.0-8.0 (0.09% sodium azide)
Storage Instruction	Store at 4°C. Do not freeze.
Note	This product contains sodium azide: a POISONOUS AND HAZARDOUS SUBSTANCE which should be handled by trained staff only.

## Applications

- Western Blot

Western blot analysis of SPTBN2 in HeLa whole cell lysate (1 mg for IP, 20% of IP loaded) with SPTBN2 polyclonal antibody (Cat # PAB12023). Antibodies : Affinity purified SPTBN2 polyclonal antibody (Cat # PAB12023) used for IP at 3 ug/mg lysate. SPTBN2 was also immunoprecipitated by SPTBN2 polyclonal antibody (Cat # PAB12022), which recognizes a downstream epitope. Detection : Chemiluminescence with an exposure time of 30 seconds.

- Immunohistochemistry (Formalin/PFA-fixed paraffin-embedded sections)

Immunohistochemical staining of SPTBN2 in human hepatocytes with SPTBN2 polyclonal antibody (Cat # PAB12023).

- Immunoprecipitation

## Gene Info — SPTBN2

Entrez GeneID	<a href="#">6712</a>
Protein Accession#	<a href="#">NP_008877.1</a>
Gene Name	SPTBN2
Gene Alias	GTRAP41, SCA5
Gene Description	spectrin, beta, non-erythrocytic 2
Omim ID	<a href="#">600224</a> <a href="#">604985</a>
Gene Ontology	<a href="#">Hyperlink</a>
Gene Summary	beta
Other Designations	beta-III spectrin spinocerebellar ataxia 5

## Disease

- [Spinocerebellar ataxia](#)
- [Spinocerebellar Ataxias](#)